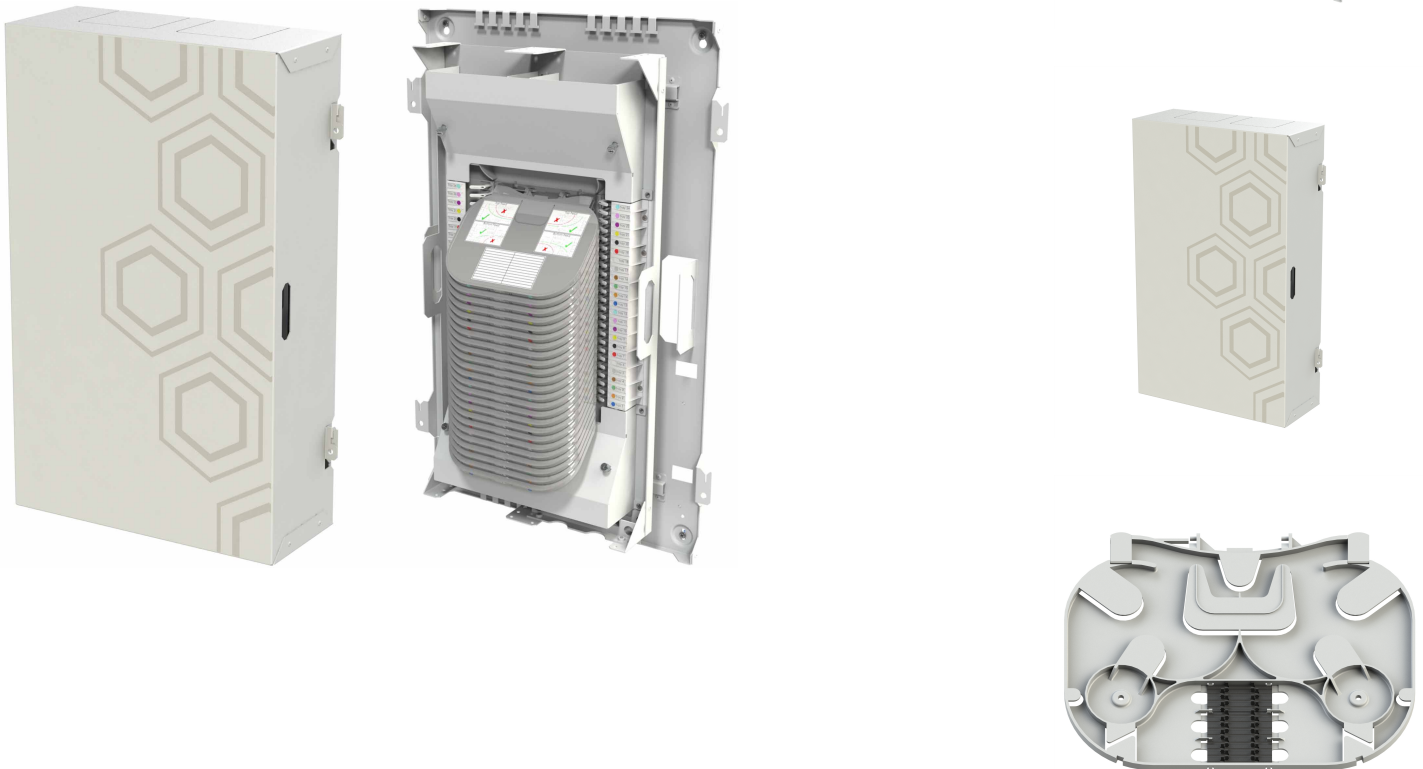


## 3456f Mass Fusion Splice Wall Cabinet



3456f Mass Fusion Splice Wall Cabinet is designed for use in a Building Entrance Facility, providing an enclosure to splice Outside Plant Cables to Inside Plant Cable with ultra-high fiber count. This cabinet is designed for easy installation by one person, space saving and cost effective. It's designed for flexibility and light weight make this cabinet an ideal choice for its application. Pass through space provides cable routing for multiple cabinets' installation.

The splice cabinet features leaf style trays which allow 144 fiber mass fusion splices per tray and a raceway & manifold system ensures 250µm fiber is protected at all times. Various sizes of cable entries are possible at both top and bottom with modular tie off points allowing up to 8 x Ø34mm at a time.

This Mass Fusion Splice Wall Cabinet has the capacity of splicing up to 3456f for SWR and traditional ribbon cables. There is an option for this product to be adapted to take standard optical fiber by purchasing our standard fiber optics splicing tray in the ordering information. With this standard splice tray, this would bring the core count to 864 fiber if all 24 standard splice trays of 36 fiber per tray are used for this.

## FEATURES/BENEFITS

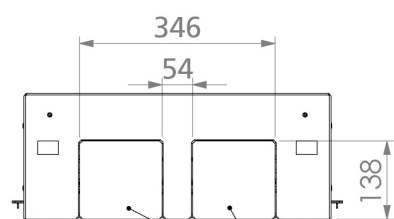
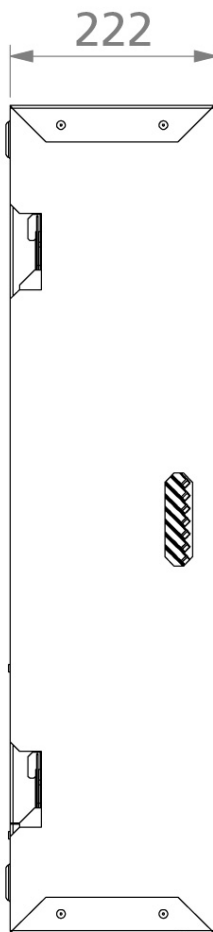
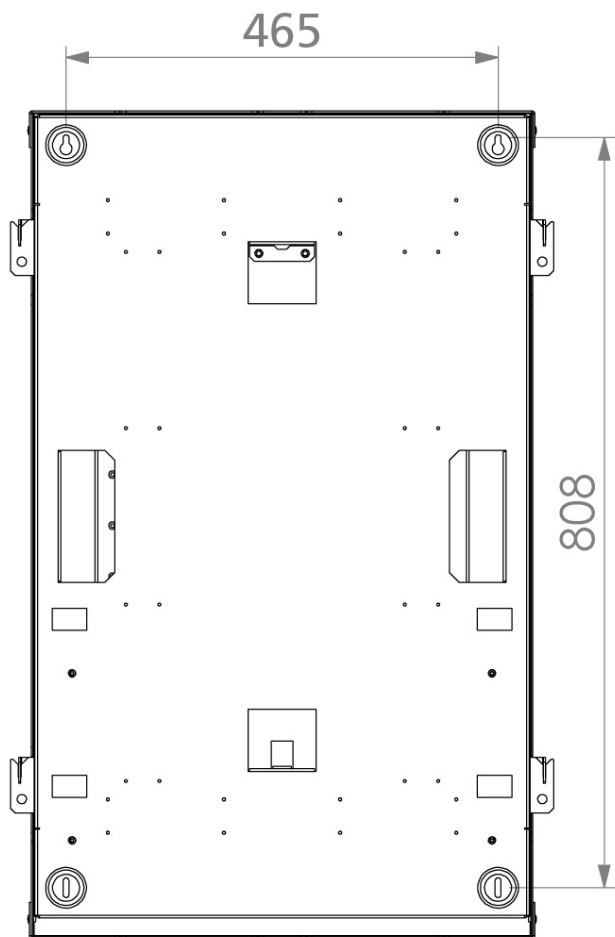
- Up to maximum of 3456 fiber count
- Mass fusion splice for traditional ribbon and SWR fiber with option for standard fiber optic cables
- Interchangeable cable tie off brackets accommodating flexibility for various sizes of entry/exit cables
- Easy lift off cover to access the Splice Tray Modular Backboard
- Holes available for security padlock to secure cover to Splice Tray Modular Backboard
- Adjustable working tray is mountable in variable heights and can be easily stored in cabinet cover
- Pass through space to allow cables management when using multiple splice cabinets. Two options of inside cabinet and outside cabinet cable pass through are possible.

## APPLICATIONS

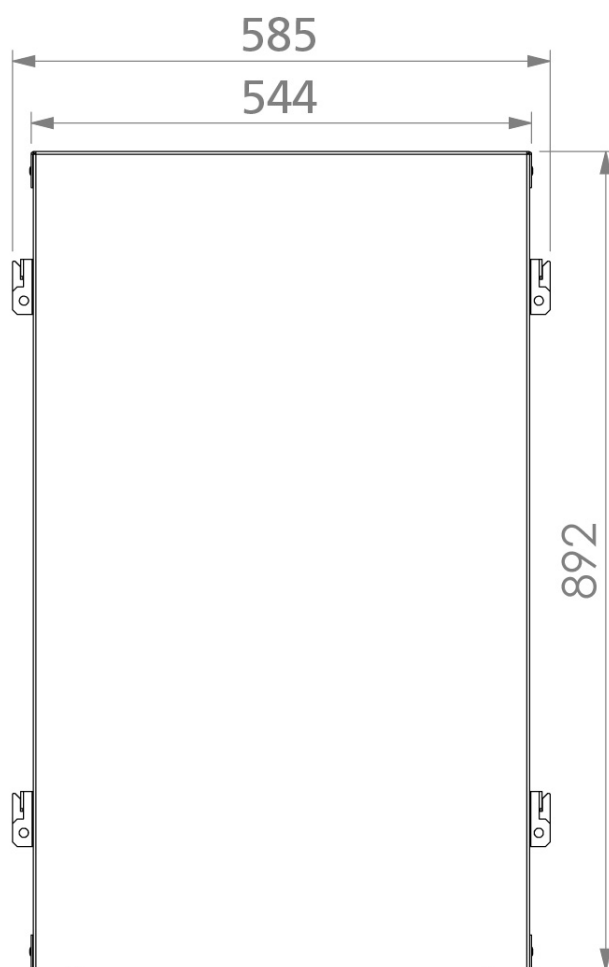
- Building entrance facility
- Datacenter
- Hyperscale
- Telecommunications

SPECIFICATIONS

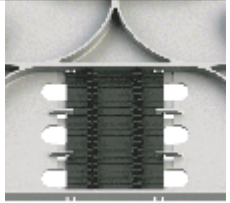
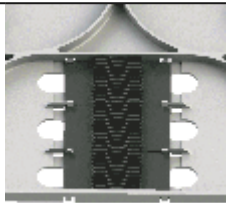

Height	882 mm
Width	585 mm
Depth	227 mm
Weight	19 kg
Fiber Count	3456
Number of Splice Tray	24
Fiber count per Splice Tray	144
Max Cable Diameter	34 mm
IP rating	IP10
Operating Temp	-40 to +60 °C
Colour	RAL7035 (Grey
Finish	Powder Coat



Cable Entry/Exit Top & Bottom



## ORDERING INFORMATION

Part Number	Description	
HCF-MFS-3456F-WC	3456f Mass Fusion Splice Wall Cabinet (24x 144 ribbon fiber splice tray, standoff mounting bracket with wall plugs, mounting screws and installation guide included)	
<b>Accessories To Be Purchased Separately</b>		
SPT15	Standard Tray 36F with Holder for Single Heatshrink Splice Protector (Heatshrink Splice Protector not included)	
SPT16	Standard Tray 36F with Holder for Single Crimp Splice Protector (Crimp Splice Protector not included)	
CTB612	6-Way Cable Tie Off Bracket - Up to Ø12mm cable tie off bracket (Mounting screws and Hose Clips included) NOTE: 4x CTB12 required to be ordered for use per Splice Wall Cabinet	



SCAN QR FOR PRODUCT PAGE

## FURTHER INFORMATION

- For additional information please contact your sales representative
- To view the product 360 visit the product page (Scan the QR code or visit the link below)
- Downloaded from <https://www.aflhyperscale.com/product/3456-splice-wall-cabinet>
- AFL Hyperscale reserves the right to make changes in this datasheet at any time without notice
- Information in this document is correct as of March 10, 2020

## Europe

+44 (0) 1908 441 144  
emeasales@aflhyperscale.com  
© AFL Hyperscale 2020

## Americas

+1 866 814 8615  
usasales@aflhyperscale.com

## Middle East &amp; Africa

+971 4 404 9606  
mesales@aflhyperscale.com

## India

+91 80 46874687  
indiasales@aflhyperscale.com

## Asia Pacific

+86 755 2561 3694  
apacsales@aflhyperscale.com