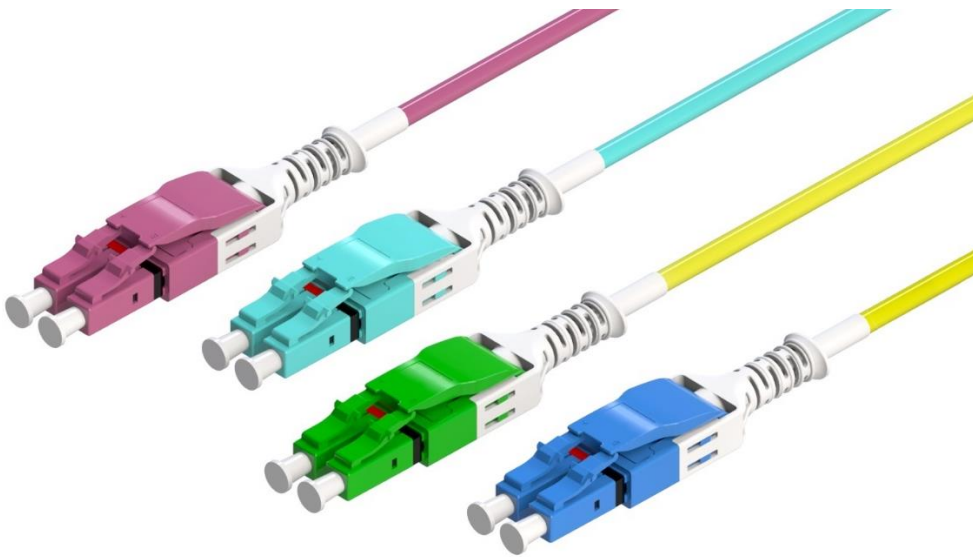


ECS HD QUICK-RELEASE REVERSIBLE UNIBOOT LC



ECS Quick-Release Push Pull Reversible Uniboot LC are designed to incorporate a reinforced boot for a quick push-pull insertion and removal of the connector without tools or tabs requirement. This innovative design helps conserve precious space in high-density panels and the connector has an easy mechanism to switch polarity within boot during installation.

The distinctive design employs a uniboot to house 2.0mm jacketed cables. This feature not only decreases cable density but also simplifies cable management in the context of contemporary high-density applications.

FEATURES

- ✓ “Simply Grab it by the Boot” – a reinforced boot for fast insertion & removal
- ✓ Quick polarity change within boot, no tools or tabs required
- ✓ Conform to IEC-61754-20 and TIA-604-10A-2002 Standard-Type LC
- ✓ All Assemblies are machine polished providing highest quality
- ✓ All Assemblies are factory tested and come with test certificate
- ✓ Available in custom length
- ✓ RoHS, REACH & SvHC compliant, Materials Conflict compliant

APPLICATIONS

- ✓ Telecommunication networks
- ✓ Data centers
- ✓ FTTx
- ✓ Broadband network

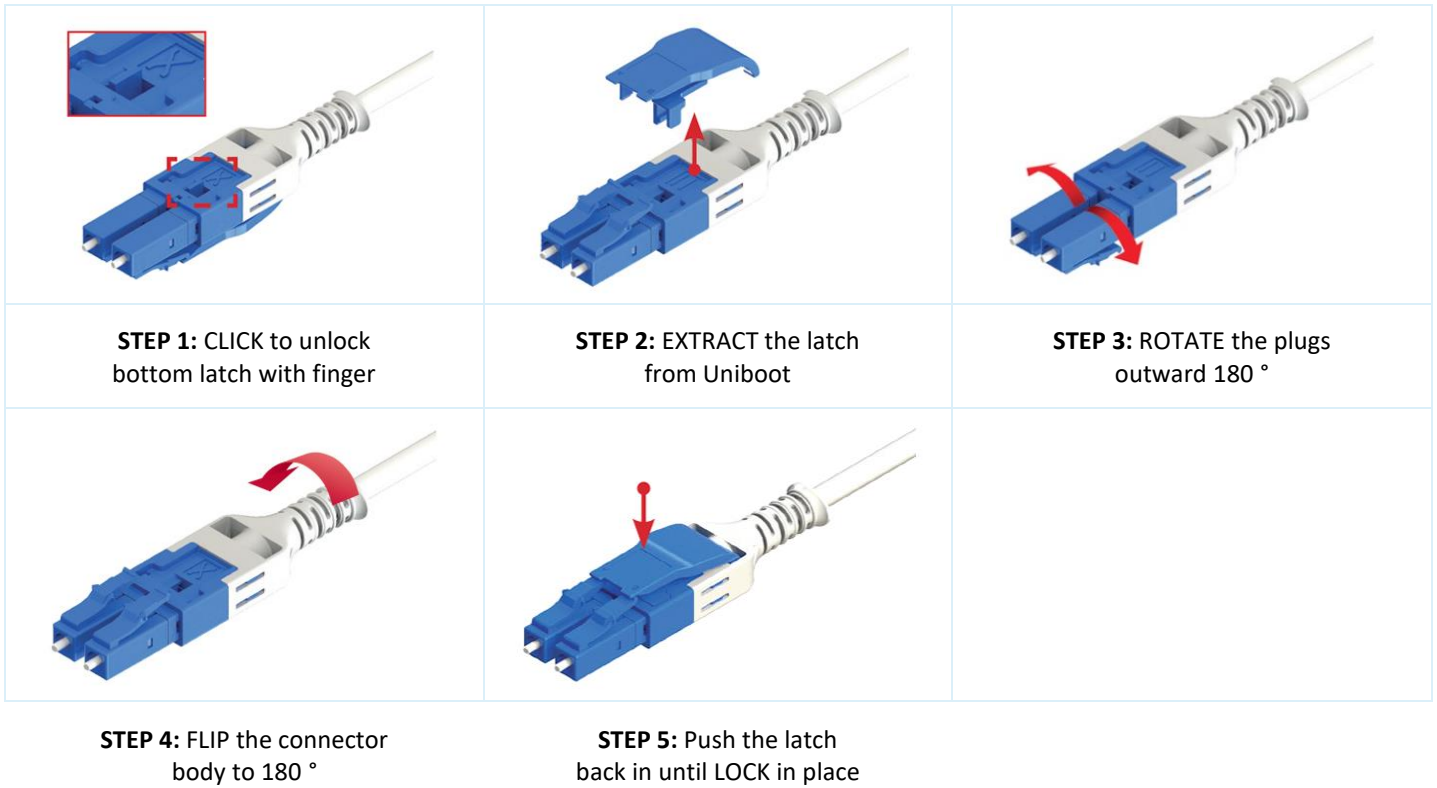
SINGLE FERRULE CONNECTOR SPECIFICATION

Parameters	IL – Max	IL – Typical	RL (UPC)	RL (APC)
SM – Premium	≤ 0.15 dB	≤ 0.12 dB	> 55 dB	> 65 dB
MM – Premium	≤ 0.15 dB	≤ 0.08 dB	> 25 dB	> 25 dB

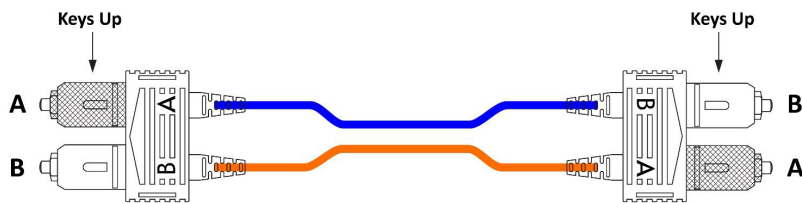
CABLE CHARACTERISTICS

Parameters	Unit	Value
Outer Diameter	mm	2.0
Tensile Strength (Long Term)	N	40
Tensile Strength (Short Term)	N	80
Crush Resistance (Long Term)	N/100mm	100
Crush Resistance (Short Term)	N/100mm	400
Min. Bending Radius (Static)	mm	30
Min. Bending Radius (Dynamic)	mm	60
Storage Temperature	°C	-20 ~ +60
Operating Temperature	°C	-20 ~ +60
Cable Weight	Kg/Km	7.6

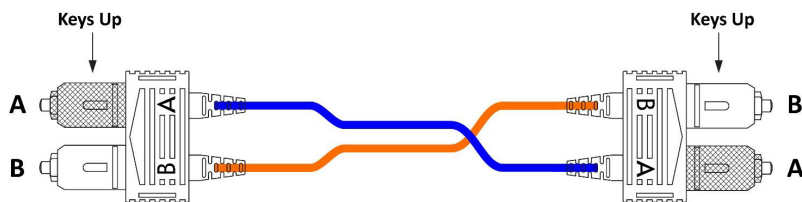
QUICK POLARITY CHANGE PROCESS



POLARITY SCHEME



STRAIGHT-THROUGH POLARITY 'A' to 'B' (Standard)



CROSSOVER POLARITY 'A' to 'A' (On Request)