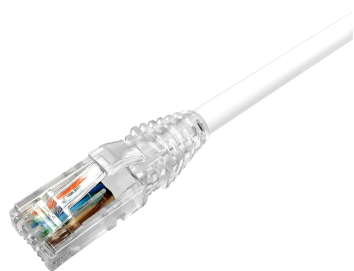


# NPC06UZDB-WT



## NPC RJ45 Patch Cord, category 6, U/UTP, LSZH, white

- High-performance patch cords exceeding industry standards supporting NETCONNECT channel specifications
- Standardized transparent, slim-line boots provides consistent patch cord appearance and supports highest density applications
- Colored clips are available to fit the transparent boot, eliminating the need of multiple colors for matching every jacket color
- Colored pull latch tabs are available for easier plug release handling from the modular jack

## Product Classification

<b>Portfolio</b>	NETCONNECT®
<b>Product Series</b>	NPC
<b>Product Type</b>	Twisted pair patch cord
<b>Regional Availability</b>	Asia   EMEA   Latin America

## Dimensions

<b>Cord Length, maximum</b>	100 m   999 cm
<b>Cord Length, minimum</b>	1 m   50 cm
<b>Diameter Over Jacket</b>	5.97 mm   0.24 in

## Electrical Specifications

<b>ANSI/TIA Category</b>	6
--------------------------	---

## Environmental Specifications

<b>Environmental Space</b>	Low Smoke Zero Halogen (LSZH)
<b>Operating Temperature</b>	-20 °C to +60 °C (-4 °F to +140 °F)
<b>Relative Humidity</b>	Up to 93%, non-condensing
<b>Safety Standard</b>	UL 1863

## General Specifications

<b>Cable Type</b>	U/UTP (unshielded)
<b>Interface, connector A</b>	RJ45 plug
<b>Interface, connector B</b>	RJ45 plug
<b>Jacket Color</b>	White
<b>Interface Feature, connector A</b>	Standard
<b>Interface Feature, connector B</b>	Standard
<b>Package Quantity</b>	1
<b>Pairs, quantity</b>	4

# NPC06UZDB-WT

---

## Mechanical Specifications

<b>Conductor Type</b>	Stranded
<b>Conductor Gauge, stranded</b>	24 AWG
<b>Plug Insertion Life, minimum</b>	750 times
<b>Wiring</b>	T568B

## Regulatory Compliance/Certifications

**Agency**  
RoHS 2011/65/EU

**Classification**  
Compliant



## Included Products

CC884001144/BU | CC6ZH WHT 4/24 SR U/UTP RL BULK (Product Component—not orderable) — CC6ZH Category 6 U/UTP Cable, low smoke zero halogen, white jacket, 4 pair count, bulk length, reel

6-2843007-1 | MP-6AU-Plug-A-1 — Modular Plug, Category 6A/6, Unshielded, Cond Insulation OD - 0.99mm, 100 pcs

2843020-3 | MP-6AU-Boot-59-1 — Integrated Boot and Pair Manager for MP-6AU, size 59, transparent