



ENOC

PROTECT AND
MAXIMIZE YOUR
DATA CENTER
INVESTMENT



EDITION
MAY 23





WELCOME TO ENDLESS OPPORTUNITIES AND FLEXIBLE SOLUTIONS – THE ENOC WAY

Enoc focuses strongly on finding solutions and new opportunities in collaboration with its customers. This requires flexibility in both design, detail and manufacturing. Our business method has made us one of Scandinavia's leading manufacturers and suppliers of enclosures and accessories for computer network, data center and telecom installations.

Details make the difference

Enoc has a wide range of floor-standing enclosures in various sizes for server installations. Our server enclosures offer excellent value for money, and meet the requirements for different types of server room installation from both a technical and cost-effectiveness perspective. In addition, they are supplemented with a wide range of accessories. High production and delivery capacity are key factors in Enoc's operations. To ensure that we can always meet our promise to customers, we combine in-house production with a network of reliable subcontractors.

Starting with the customer's needs

A cornerstone of Enoc's business concept is to take the customer's specific needs as a starting point. This philosophy is reflected in the whole supply and production chain, from design and marketing right through to sales. It is a deciding factor for many of our customers. Our flexibility in details and solutions makes Enoc a partner you can depend on.

THE ENOC WAY

References	4	S1 CX Server enclosure	12	EPI Power distribution units	34
Special solutions	7	So1 Server enclosure	16	CT Cable tray system	38
Data center solution	8	ENOC Aisle Containment	18	Air control accessories	41
S1 Server enclosure	10	Enoc RX System	32	The entire supply chain	42



ENOC IS A EUROPEAN SOLUTION PROVIDER THAT LISTENS TO YOUR NEEDS

At Enoc we have the knowledge and the experience to protect and maximize data center investments with solutions specially designed for their custom needs and requirements. We have a strong sales organisation with our own sales force and a network of partners throughout Europe. This enables us to provide excellent services and fast delivery worldwide. Below you can read about a few of our solutions with our customers.

Cibicom, Alcadon and Enoc in the perfect partnership

For Cibicom, it's important to have a collaboration with both supplier and manufacturer. The collaboration between Cibicom, Alcadon and Enoc has been very enriching, and here at Enoc we have been able to successfully handle the changes that Cibicom wanted. The geographical proximity has also been a benefit, meaning that we could minimize our CO2 footprint during manufacturing and transportation. Being able to ensure a good, safe working environment is another thing that Cibicom considered when selecting a supplier. Together, we have developed a data center solution with air control for separated cold and hot air.

Cibicom is a Danish independent network operator and Internet Service Provider (ISP). The company provides solutions and services for mission-critical communications to, among others, the Danish Coastal Radio, the Danish Defence and infrastructure for telecommunications operators.

Alcadon is a leading Swedish supplier of data and telecommunications products in the Nordic region. The company develops products, solutions and systems within data communications and network infrastructure.

“Enoc racks are of high quality and offer a number of product benefits that are truly outstanding. The racks have a stable aluminium frame and can stand directly on the

floor, with a good weight distribution to prevent overloading of the floor structure. And the racks have a stylish finish, of course. No sharp edges to cut yourself on and a door that is fully integrated.”

Successful project in collaboration with Bahnhof

Bahnhof is a Swedish provider of internet broadband services, including IP telephony and IPTV. Bahnhof also operates data centers. The company offers fast and secure internet services, cloud services and colocation worldwide.

Together, we created a data center solution with efficient cooling and low energy consumption. The videos show some of the benefits of hiring a Swedish supplier with a focus on solutions and details that make a difference to the result.

At Enoc, we have the expertise to deliver complete data center solutions to protect your investment. We create an infrastructure that is both flexible and space saving. With our special cold and hot corridors, ceilings, sliding wall sections, doors and chimneys, we create the best Aisle containment solutions for your needs. We also have lots of accessories, from smart locking systems to special PDUs, offering maximum functionality and availability with high security.



Aisle Containment at Cibicom





SPECIAL SOLUTIONS FOR SPECIAL DEMANDS – THE ENOC WAY

Focusing on our customer's specific needs is central in our product development, and having an eye for detail and technical design. At Enoc we are committed to finding the solution that best fits you. That is what we call "The Enoc Way".

Smart chimney solutions

A unique and space-saving cooling concept with chimneys on top of the enclosures that are designed to separate cold and hot air zones. At Enoc we have the technical expertise required to offer all types of cooling concept to improve efficiency in data centers.

Lock system adapted for custom needs

Electronic code lock system, tag readers or lock systems with adapting properties. We have a wide range of locking systems to prevent unauthorised access to equipment in the enclosures.

Special PDU:s for special demands

If our standard PDU:s don't fit your requirements we can offer PDU:s with special configurations. Outlets – C13, C19, Schuko, French – are available in any quantity. Inlets, from 1-phase 10A C14 to 3x32A IEC. Functions, from switchable high end PDU:s to basic PDU:s with a built-in ampere meter.

Freestanding Aisle Containment, HAC

Complete and customized corridor solutions to fit into different types of server rooms. Flexible solutions and quick installation. Contact us for more information.



Special corridor solutions

Our special corridor solutions can fit into different types of server rooms with low ceilings, roof sections and various types of enclosures heights.



INCREASE ENERGY EFFICIENCY AND PROTECTION STANDARD OR CUSTOM-FITTED



ENOC RX SYSTEM

Open rack system, two-post and four-post, available freestanding or wall mounted.

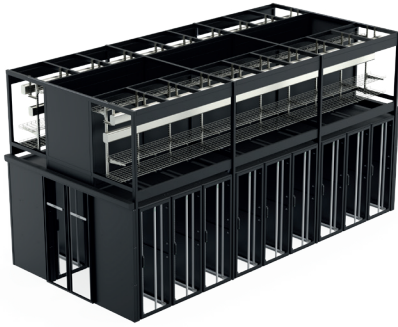
See pages: 32-33



FORM AND FUNCTION WITH ENOC ENCLOSURES

A stepless assembly system (S1, So1 or S1 CX) easily supports your equipment, in exactly the spot you want it. With the option of off-centre positioning, you can create plenty of space, where you need it. The racks are built with aluminium profiles and support up to 1500 kilos.

See pages: 10-17



ENOC AISLE CONTAINMENT

Optimize your data center investment.

See pages: 18-31



RELIABLE PDU:s, LOCAL OR REMOTE MONITORING

Our range of PDU:s (EPI serie), can be used alone as reliable power distribution units without any monitoring functionality. They can also be fitted with a monitoring module (EPI MM) for local and remote monitoring through TCP/IP.

See pages: 34-37



CABLE TRAY SYSTEM

A wide range of cable management products that meet your different needs.

See pages: 38-40



S1 SERVER ENCLOSURE

NEW DOOR, NEW HANDLE, NEW CORNER

IMPROVED AND MORE SECURE DESIGN

Enoc S1 is a series of premium server racks with optimal flexibility and stability to protect and organize your IT equipment. Upgraded design to make it even easier to assemble, disassemble and reassemble. Built with aluminium profiles with diecast zinc corners. High load capacity up to 1500 kilos. The Enoc stepless assembly system is designed to make it easier to place the equipment exactly where you want it. The S1 is assembled with screws that ensure a quick and cost-effective installation. It can be adapted as your business grows and changes. With the option of off-centre positioning, you can create plenty of space where you need it. A large space on both sides, or an extra large space on one side.

TECHNICAL INFORMATION

- Screw-assembled frame with aluminium profiles and diecast zinc corners. The frame has two integrated vertical screw pockets in each corner profile for universal mounting of accessories.
- Frame can be dismantled by means of screws.
- Finish: textured black RAL 9005 or white RAL 9003.
- Ingress protection class IP20.
- Maximum static load 1.500 kg, divided on 4 19" profiles.
- 1 central earthing point M5 in left rear corner post.
- The 19" profiles can be steplessly repositioned through the depth of the enclosure. The depth profiles have markings for precise positioning and are numbered in height units. The whole assembly can be moved right or left to an off-centre position (800 mm width).

Enclosures have two pairs of 19" profiles. One pair is pre-installed at a depth of 100 mm from the front of the enclosure and the other pair is pre-installed 600 mm further in 800 mm depth and 740 mm further in 1000 and 1200 mm depth.

Front door and back door

- Front and rear door is made of 1 mm perforated sheet steel built into an aluminium frame. 85% perforation [hexagonal] on perforated surface area. LS 95 ergonomic locking handle with C101 safety cylinder. Can be adapted for other lock systems. Integrated quick lock system allows door to be removed without use of tools. Door opening angle >180° in single enclosure configuration. Righthinged, possibility to left hanging.

Side panels

- Sheet steel side panels, easy to detach and lockable from inside.

Top panels

- The top consists of replaceable modular panels. Two panels has cable glands with brush-strip on the left and right side rear and the rest are cover plates. Can be replaced with ventilation panels, fan packages or panels with integrated cable glands. All modules can be rotated 90°. The U-shaped panel with integrated cable glands makes it easy to move pre-existing installations into the enclosure.

Bottom

- The base is open, but can be fitted with cover plate/base plate packages.

TECHNICAL DATA, BLACK

NAME	ART. NO.	EAN	E NUMBER	W x D x H (mm)	HU
S1 61012-S	56214	7330701088131	2500684	600 x 1000 x 1200	24
S1 81012-S	56219	7330701088186	2500685	800 x 1000 x 1200	24
S1 61020-S	56254	7330701088537	2500686	600 x 1000 x 2000	42
S1 61220-S	56255	7330701088544	2500687	600 x 1200 x 2000	42
S1 81020-S	56259	7330701088582	2500688	800 x 1000 x 2000	42
S1 81220-S	56260	7330701088599	2500689	800 x 1200 x 2000	42
S1 61022-S	56264	7330701088636	2500690	600 x 1000 x 2200	47
S1 61222-S	56265	7330701088643	2500691	600 x 1200 x 2200	47
S1 81022-S	56269	7330701088681	2500692	800 x 1000 x 2200	47
S1 81222-S	56270	7330701088698	2500693	800 x 1200 x 2200	47
S1 6820-S	56252	7330701088513	2503793	600 x 800 x 2000	42
S1 6822-S	56262	7330701088612	2503794	600 x 800 x 2200	47
S1 8820-S	56257	7330701088568	2503676	800 x 800 x 2000	42
S1 8822-S	56267	7330701088667	2503677	800 x 800 x 2200	47

TECHNICAL DATA, WHITE

NAME	ART. NO.	EAN	E NUMBER	W x D x H (mm)	HU
S1 61020-V	58114	7330701105135	2503785	600 x 1000 x 2000	42
S1 61220-V	58115	7330701105142	2503786	600 x 1200 x 2000	42
S1 61022-V	58124	7330701105234	2503787	600 x 1000 x 2200	47
S1 61222-V	58125	7330701105241	2503788	600 x 1200 x 2200	47
S1 81020-V	58119	7330701105180	2503789	800 x 1000 x 2000	42
S1 81220-V	58120	7330701105197	2503790	800 x 1200 x 2000	42
S1 81022-V	58129	7330701105289	2503791	800 x 1000 x 2200	47
S1 81222-V	58130	7330701105296	2503792	800 x 1200 x 2200	47



SIZES

Height: 24, 42 & 47HU
Width: 600 & 800 mm
Depth: 800, 1000 & 1200 mm
Other sizes available on request

QUALITY

Maximum static load 1500
kilos, divided on four 19" profiles.
Made of aluminium profiles.
Concealed screws.

COLOR

Black RAL 9005 &
White RAL 9003.
Other RAL-colors
on request.

EASY ASSEMBLY

Easy to assemble,
dismantle & reassemble.



S1 CX SERVER ENCLOSURE THE PERFECT SOLUTION FOR COLOCATION SETUPS

The new Enoc S1 CX is a series of server enclosures built to optimize and increase security in colocation or data centers. Each cabinet can be built with 2, 3 or 4 compartments, separated by a shelf. It is built with the Enoc S1 frame which means the same stability and interior design and all standard accessories will fit. The S1 CX is assembled with screws ensuring a quick and cost effective installation. At Enoc we are committed to finding the solution that best fits you. That is what we call “The Enoc Way”.

TECHNICAL INFORMATION

- 2000 and 2200 mm high enclosure in 2, 3 or 4 compartments. Possible with more compartments on request.
- S1 standard frame. Built with aluminium profiles and supports up to 1500 kilos, divided on four 19" profiles.
- Screw-assembled frame with aluminium profiles and die-cast zinc corners. The frame has two integrated vertical screw pockets in each corner profile for universal mounting of accessories.
- Finish: textured black RAL 9005.
- Ingress protection class IP20.
- Frame can be dismantled by means of screws.
- The 19" profiles can be steplessly repositioned through the depth of the enclosure. The depth profiles have markings for precise positioning and are numbered in height units.

All enclosures have two pairs of 19" profiles for each compartment. One pair is pre-installed at a depth of 100 mm from the front of the enclosure and the other pair is pre-installed 740 mm further in.

- 1 central earthing point M5 in left rear corner post.

Front door and back door

- Front and rear door is made of 1 mm perforated sheet steel built into an aluminium frame. 85% perforation (hexagonal) on perforated surface area. LS 95 ergonomic locking handle with C101 safety cylinder. Can be adapted for other lock systems. Integrated quick lock system allows door to be removed without use of tools. Door opening angle >180° in single enclosure configuration. Righthinged, possibility to left hanging.

Side panels

- Sheet steel side panels, easy to detach, lockable from inside and from more than one compartment.

Top panels

- The top consists of replaceable modular panels. Two panels has cable glands with brush-strip on the left and right side rear and the rest are cover plates. Can be replaced with ventilation panels, fan packages or panels with integrated cable glands. All modules can be rotated 90°. The U-shaped panel with integrated cable glands makes it easy to move pre-existing installations into the enclosure.

Bottom

- The base is open, but can be fitted with cover plate/base plate packages.



SIZES

Height: 2000 & 2200 mm
Width: 600 & 800 mm
Depth: 1000 & 1200 mm

SECURITY

Locking system ensures access for authorised staff only.

COMPARTMENTS

2, 3 or 4 compartments.
Possible with more compartments on request.

QUALITY

1500 kg, divided on four 19" profiles. S1 standard frame. Made of aluminium profiles. Concealed screws.



S1 CX SERVER ENCLOSURE

TECHNICAL DATA S1 C2

NAME	ART. NO.	EAN	E NUMBER	W x D x H (mm)	REMARK
S1 C2 61020-S	57301	7330701098000	2501443	600 x 1000 x 2000	2 x 20 HU
S1 C2 81020-S	57306	7330701098055	2501446	800 x 1000 x 2000	2 x 20 HU
S1 C2 61220-S	57311	7330701098109	2501449	600 x 1200 x 2000	2 x 20 HU
S1 C2 81220-S	57316	7330701098154	2501452	800 x 1200 x 2000	2 x 20 HU
S1 C2 61022-S	57321	7330701098208	2501455	600 x 1000 x 2200	2 x 22 HU
S1 C2 81022-S	57326	7330701098253	2501458	800 x 1000 x 2200	2 x 22 HU
S1 C2 61222-S	57331	7330701098307	2501461	600 x 1200 x 2200	2 x 22 HU
S1 C2 81222-S	57336	7330701098352	2501464	800 x 1200 x 2200	2 x 22 HU

TECHNICAL DATA S1 C3

NAME	ART. NO.	EAN	E NUMBER	W x D x H (mm)	REMARK
S1 C3 61020-S	57302	7330701098017	2501444	600 x 1000 x 2000	3 x 12 HU
S1 C3 81020-S	57307	7330701098062	2501447	800 x 1000 x 2000	3 x 12 HU
S1 C3 61220-S	57312	7330701098116	2501450	600 x 1200 x 2000	3 x 12 HU
S1 C3 81220-S	57317	7330701098161	2501453	800 x 1200 x 2000	3 x 12 HU
S1 C3 61022-S	57322	7330701098215	2501456	600 x 1000 x 2200	3 x 14 HU
S1 C3 81022-S	57327	7330701098260	2501459	800 x 1000 x 2200	3 x 14 HU
S1 C3 61222-S	57332	7330701098314	2501462	600 x 1200 x 2200	3 x 14 HU
S1 C3 81222-S	57337	7330701098369	2501465	800 x 1200 x 2200	3 x 14 HU

TECHNICAL DATA S1 C4

NAME	ART. NO.	EAN	E NUMBER	W x D x H (mm)	REMARK
S1 C4 61020-S	57303	7330701098024	2501445	600 x 1000 x 2000	4 x 9 HU
S1 C4 81020-S	57308	7330701098079	2501448	800 x 1000 x 2000	4 x 9 HU
S1 C4 61220-S	57313	7330701098123	2501451	600 x 1200 x 2000	4 x 9 HU
S1 C4 81220-S	57318	7330701098178	2501454	800 x 1200 x 2000	4 x 9 HU
S1 C4 61022-S	57323	7330701098222	2501457	600 x 1000 x 2200	4 x 10 HU
S1 C4 81022-S	57328	7330701098277	2501460	800 x 1000 x 2200	4 x 10 HU
S1 C4 61222-S	57333	7330701098321	2501463	600 x 1200 x 2200	4 x 10 HU

S1 C2 • 2 compartments



View of inner framework

S1 C3 • 3 compartments



View of inner framework

S1 C4 • 4 compartments



View of inner framework



So1 OPEN SERVER FRAME

EASY ACCESS AND PLENTY OF OPEN SPACE

Enoc So1 is a series of open frame server-racks without sides or doors. Perfect for applications that don't require physical security. The So1 has a stable interior that supports loads up to 1500 kilos. The Enoc stepless assembly system is designed to make it easy to place the equipment exactly where you want it. The frame is assembled with nothing but screws, making it easy to assemble, dismantle and reassemble. The So1 can be adapted as your business grows and changes. The So1:s rounded corners give a nice sleek look. The concealed screws and aluminium profiles contribute to a streamlined appearance. With the option of off-centre positioning, you can create plenty of space where you need it. A large space on both sides, or an extra large space on one side.

TECHNICAL INFORMATION

- Screw-assembled frame with aluminium profiles and die-cast zinc corners. The frame has two integrated vertical screw pockets in each corner profile for universal mounting of accessories.
- Frame can be dismantled by means of screws.
- Finish: textured black RAL 9005.
- Ingress protection class IP20.
- Maximum static load 1.500 kg, divided on 4 19" profiles.
- The 19" profiles can be steplessly repositioned through the depth of the enclosure. The depth profiles have markings for precise positioning and are numbered in height units.

The whole assembly can be moved right or left to an off-centre position (800 mm width). Enclosures have two pairs of 19" profiles. One pair is pre-installed at a depth of 100 mm from the front of the enclosure and the other pair is pre-installed 600 mm further in 800 mm depth and 740 mm further in 1000 and 1200 mm depth.

- 1 central earthing point M5 in left rear corner post.

Open frame

- So1-frame has no doors or side panels. Can be supplemented with doors and side panels from our range of accessories.

Top panels

- The top consists of replaceable modular panels. Two panels has cable glands with brush-strip on the left and right side rear and the rest are cover plates. Can be replaced with ventilation panels, fan packages or panels with integrated cable glands. All modules can be rotated 90°. The U-shaped panel with integrated cable glands makes it easy to move pre-existing installations into the enclosure.

Bottom

- The base is open, but can be fitted with cover plate/base plate packages.

TECHNICAL DATA

NAME	ART. NO.	EAN	E NUMBER	WxDxH (mm)	HU
So1 61012-S	56314	7330701089138	2500694	600 x 1000 x 1200	24
So1 81012-S	56319	7330701089183	2500695	800 x 1000 x 1200	24
So1 61020-S	56354	7330701089534	2500696	600 x 1000 x 2000	42
So1 61220-S	56355	7330701089541	2500697	600 x 1200 x 2000	42
So1 8820-S	56357	7330701089565	2504191	800 x 800 x 2000	42
So1 81020-S	56359	7330701089589	2500698	800 x 1000 x 2000	42
So1 81220-S	56360	7330701089596	2500699	800 x 1200 x 2000	42
So1 61022-S	56364	7330701089633	2500700	600 x 1000 x 2200	47
So1 61222-S	56365	7330701089640	2500701	600 x 1200 x 2200	47
So1 8822-S	56367	7330701089664	2504192	800 x 800 x 2200	47
So1 81022-S	56369	7330701089688	2500702	800 x 1000 x 2200	47
So1 81222-S	56370	7330701089695	2500703	800 x 1200 x 2200	47



SIZES

Height: 24, 42 & 47HU
Width: 600 & 800 mm
Depth: 800, 1000 & 1200 mm
Other sizes available on request.

QUALITY

Maximum static load 1500
kilos, divided on four 19" profiles.
Made of aluminium profiles.
Concealed screws.

COLOR

Black RAL 9005.
Other RAL-colors
on request.

EASY ACCESS

Open frame ensures
easy access.



DATA CENTER SOLUTIONS

INCREASE ENERGY EFFICIENCY AND PROTECTION

Flexible solutions for server rooms and data centers, with six base solutions. Each of them can be equipped with different panels – fixed metal, fixed channel plastic or openable metal panels.

HAC-H HANGING

Hot Aisle Containment hanging from suspended roof or from the building.

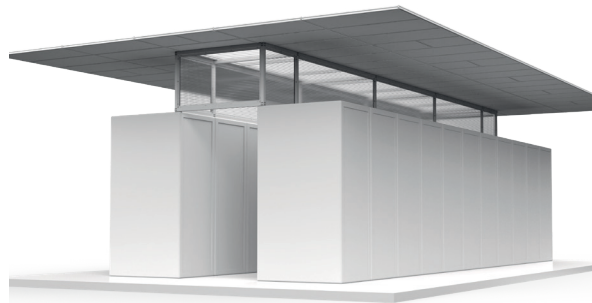
See page: 20



HAC-S STANDING

Hot Aisle Containment standing on top of racks

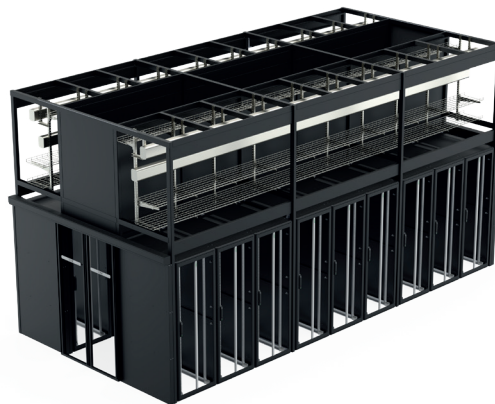
See page: 22



HAC-F FREESTANDING

Freestanding Hot Aisle Containment with a load capacity up to 200 kg per side.

See page: 24



Optimizing air flow in your data center with the use of Hot Aisle Containment, HAC, has several benefits, including reducing energy costs and improving efficiency.

The right choice of HAC and adaption to the cooling system gives the data center an optimal temperature.

HCC HOT CHIMNEY

Hot Chimney Containment, a chimney solutions with room cooling.

See page: 25



CAC-RS RACKSTANDING

Cold Aisle Containment system with complete hot and cold air separation.

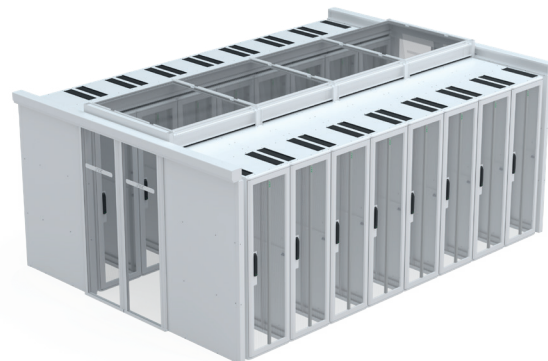
See page: 26



CAC-RF RACK FREESTANDING

Cold Aisle Containment, ideal for installations where flexibility of racks are required.

See page: 27





HAC-H

HANGING HOT AISLE CONTAINMENT

HAC-H, Hanging Hot Aisle Containment. Ideal in buildings with load carrying suspended roof. With telescopic blanking panels a flexible solution is possible, e.g. different rack heights. Makes change of racks easier. Available with telescopic or non telescopic versions.



TECHNICAL INFORMATION

- The frame is steel tubes assembled with screws
- Available with or without telescopic panels
- Telescopic blanking panels seals the gap between the HAC frame and the cabinets
- End of rows are sealed with Enoc KKD G3 door sections

Every solution is customized individually

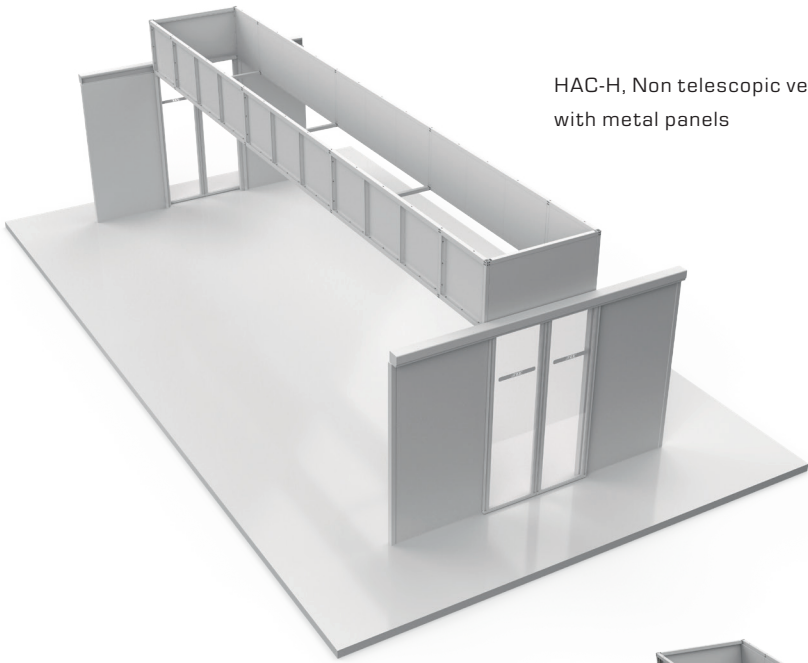
- Roof height
- Row length and aisle width
- Maximum rack height (free space under the telescopic beam)
- Rack dimensions and number of racks
- Filling panel solution: metal or channel plastic or openable panel

Adaptations

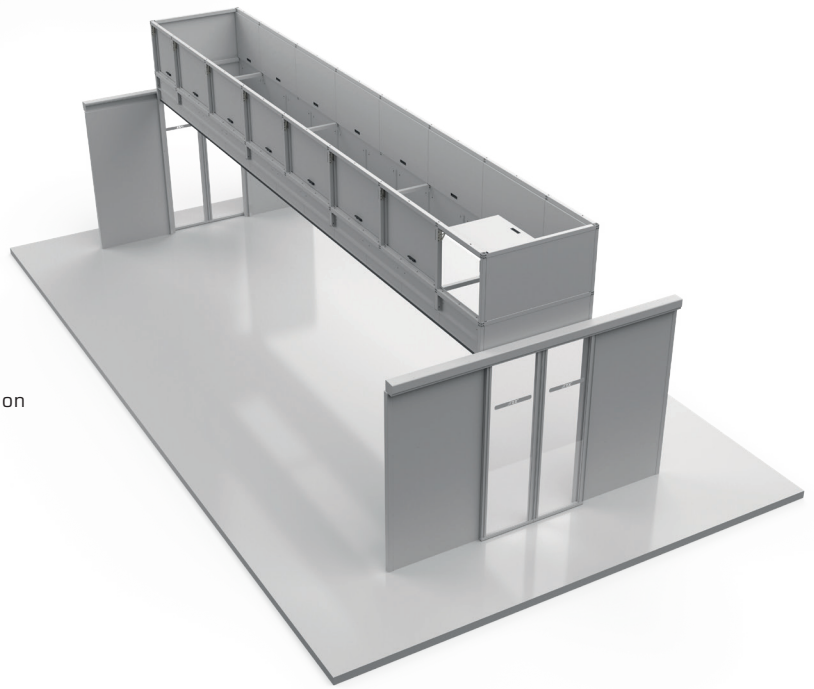
- Double or single row (next to wall)
- Adaptations to building constraints, e.g. columns in the HAC rows
- Cable trays running through the aisle

Colors

- Any color
- Standard: RAL 9003 (white) and RAL 9005 (black)



HAC-H, Non telescopic version
with metal panels



HAC-H, Telescopic version
with openable panels

FILLING OPTIONS

- Filling option one:
metal panels,
stable and smooth looking filling panels
- Filling option two:
channel plastic panels.
Ideal when higher insulation degree is required. The solution als lets more outside light into the aisle.
- Filling option three:
openable metal panels.
Ideal when access is needed from inside the hot aisle.



HAC-S STANDING HOT AISLE CONTAINMENT

HAC-S, Standing Hot Aisle Containment, on top of a rack configuration. Ideal in installations with more fixed rack setup.



TECHNICAL INFORMATION

- The frame is steel tubes assembled with screws
- Available with or without telescopic panels
- Telescopic blanking panels seals the gap between the HAC frame and the cabinets
- End of rows are sealed with Enoc KKD G3 door sections

Every solution is customized individually

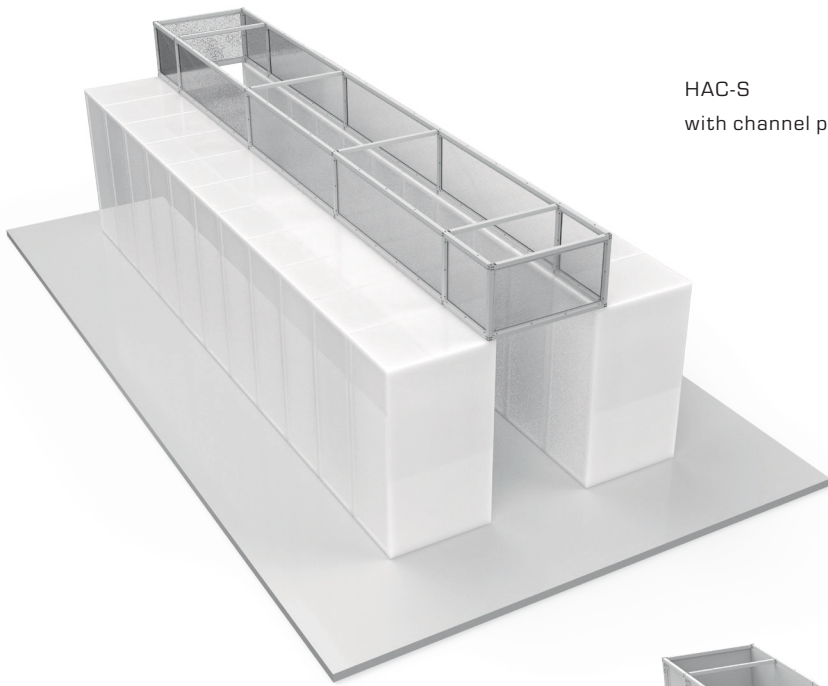
- Roof height
- Row length and aisle width
- Rack height
- Rack dimensions and number of racks
- Filling panel solution: metal, channel plastic or openable panels

Adaptations

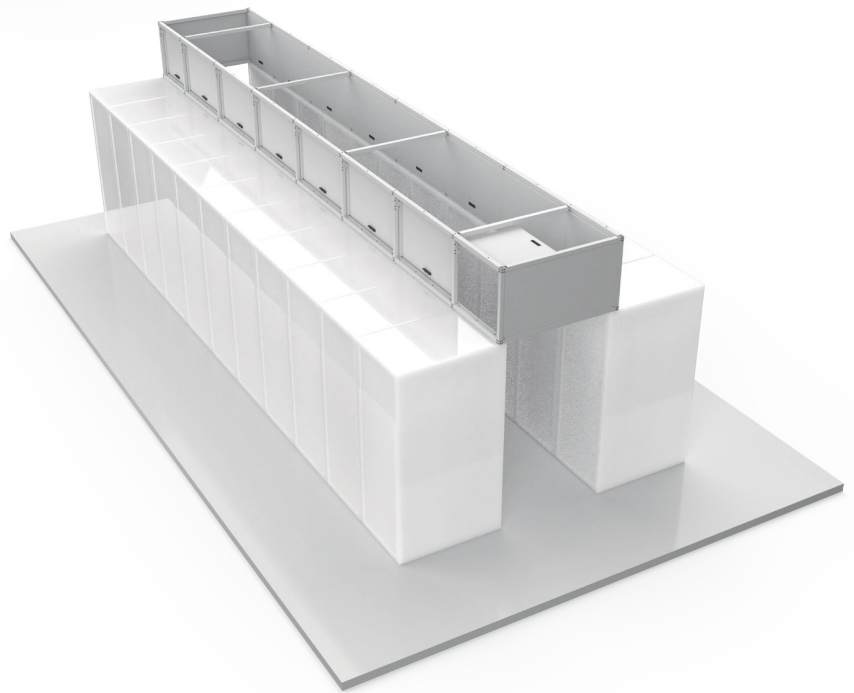
- Double or single row (next to wall)
- Adaptations to building constraints, e.g. columns in the HAC rows

Colors

- Any color
- Standard: RAL 9003 (white) and RAL 9005 (black)



HAC-S
with channel plastic



HAC-S
with openable panels

FILLING OPTIONS

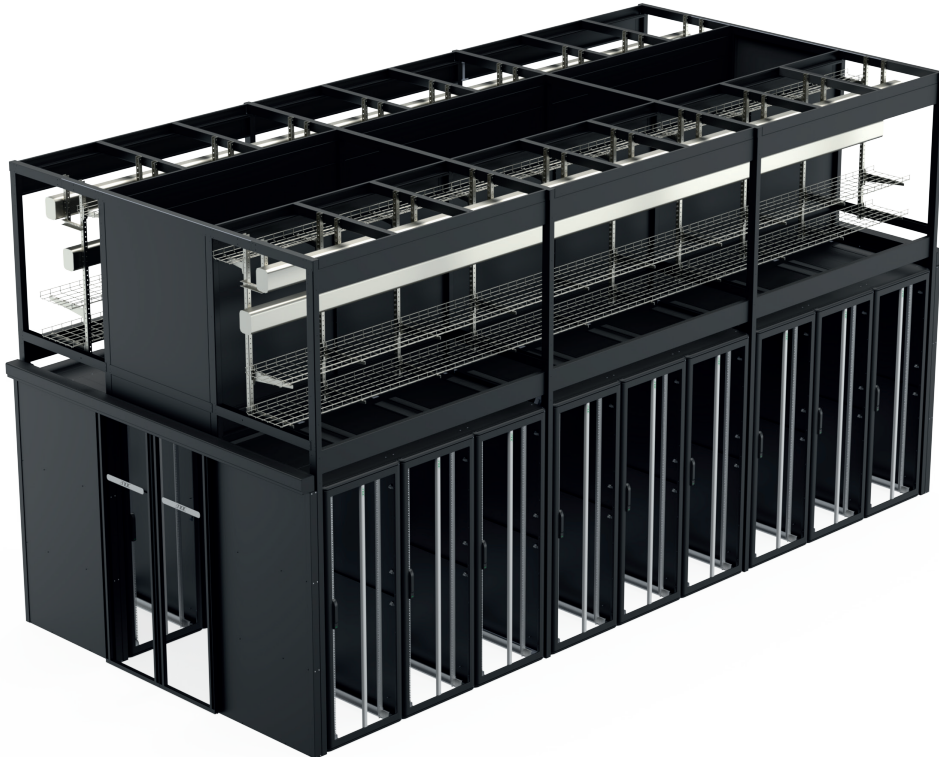
- Filling option one:
metal panels,
stable and smooth looking filling panels
- Filling option two:
channel plastic panels.
Ideal when higher insulation degree is required. The solution als lets more outside light into the aisle.
- Filling option three:
openable metal panels.
Ideal when access is needed from inside the hot aisle.



HAC-F

FREE STANDING HOT AISLE CONTAINMENT

HAC-F, Freestanding Hot Aisle Containment. Ideal for buildings with high ceilings. This solution will carry loads from cable trays, busbars, and roof, instead of fixing it to the roof of the building.



TECHNICAL INFORMATION

- The frame is steel tubes and beams assembled with screws
- Telescopic blanking panels seals the gap between the HAC frame and the cabinets
- End of rows are sealed with Enoc KKD G3 door sections
- Maximum static load 200 kg/m

Adaptations

- Double or single row (next to wall)
- Adaptations to building constraints, e.g. columns in the HAC rows
- Cable trays running through the aisle

Every solution is customized individually

- Roof height
- Row length and aisle width
- Maximum rack height (free space under the telescopic beam)
- Rack dimensions and number of racks
- Filling panel solution: metal or channel plastic

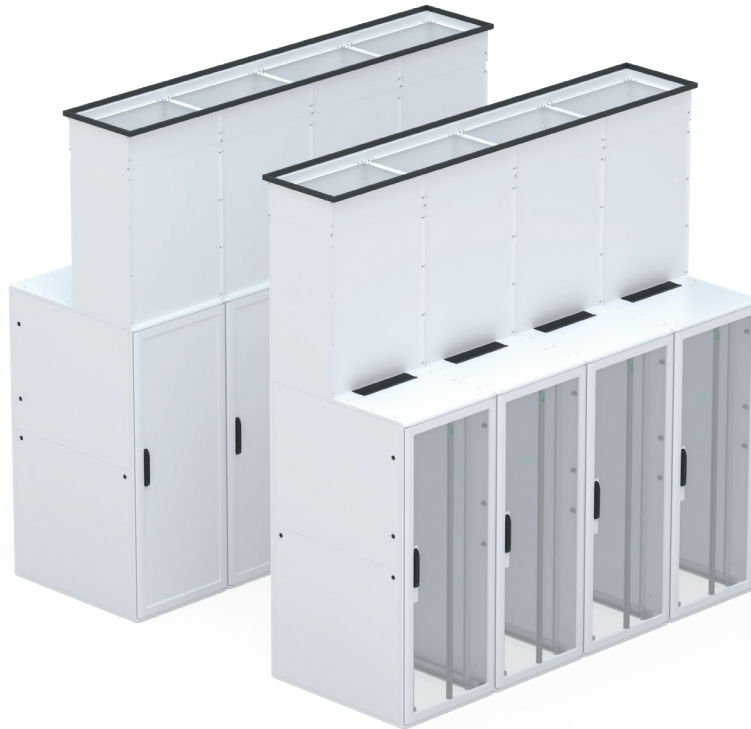
Colors

- Any color
- Standard: RAL 9003 (white) and RAL 9005 (black)

HCC

HOT CHIMNEY CONTAINMENT

HCC, Hot Chimney Containment, our chimney solutions with room cooling are available in different dimensions. Allows flexible placement of racks and cabinets. The design is self-supporting and requires no fixing in top. Cools the entire room.



TECHNICAL INFORMATION

- The chimney is with telescopic panels assembled with screws
- Telescopic chimney seals the gap between the roof and the cabinets
- No need for door sections

Adaptations

- Adaptations to building constraints, e.g. plates in the roof
- Adaptions to room cooling or floor cooling, e.g. plates in the floor

Every solution is customized individually

- Roof height
- Rack height
- Rack dimensions
- No need for extra filling panel solution

Colors

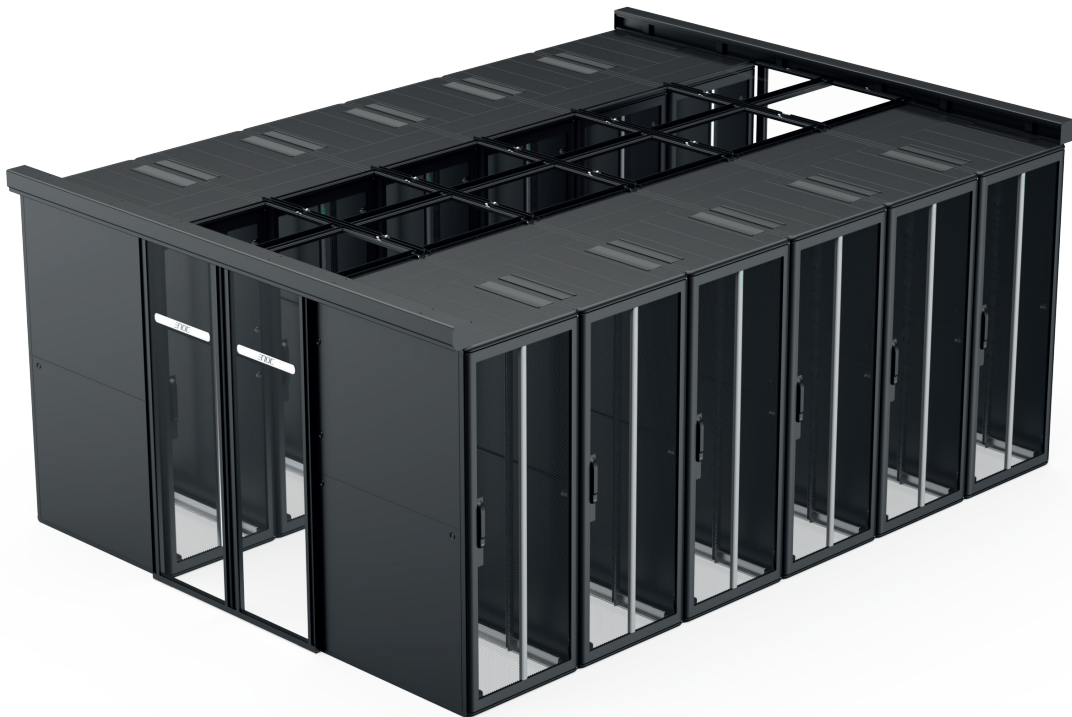
- Any color
- Standard: RAL 9003 (white) and RAL 9005 (black)



CAC-RS

Cold Aisle Containment – Rack Standing

CAC-RS, Cold Aisle Containment system with complete hot and cold air separation. Optimizing air flow in your data center with the use of containment has several benefits, including reducing energy costs and improving efficiency.



TECHNICAL INFORMATION

- KKD G3 sliding doors
- KKT G3 for creating aisle containment together with S1 server enclosures.
- Roof tiles of 4 mm fully tempered security glass, hold in place with slotted lock.
- End of rows are sealed with Enoc KKD G3 door sections

Adaptations

- Double or single row (next to wall)
- Adaptations to building constraints, e.g. columns in the CAC rows

Every solution is customized individually

- Row length and aisle width
- Rack height
- Rack dimensions and number of racks

Colors

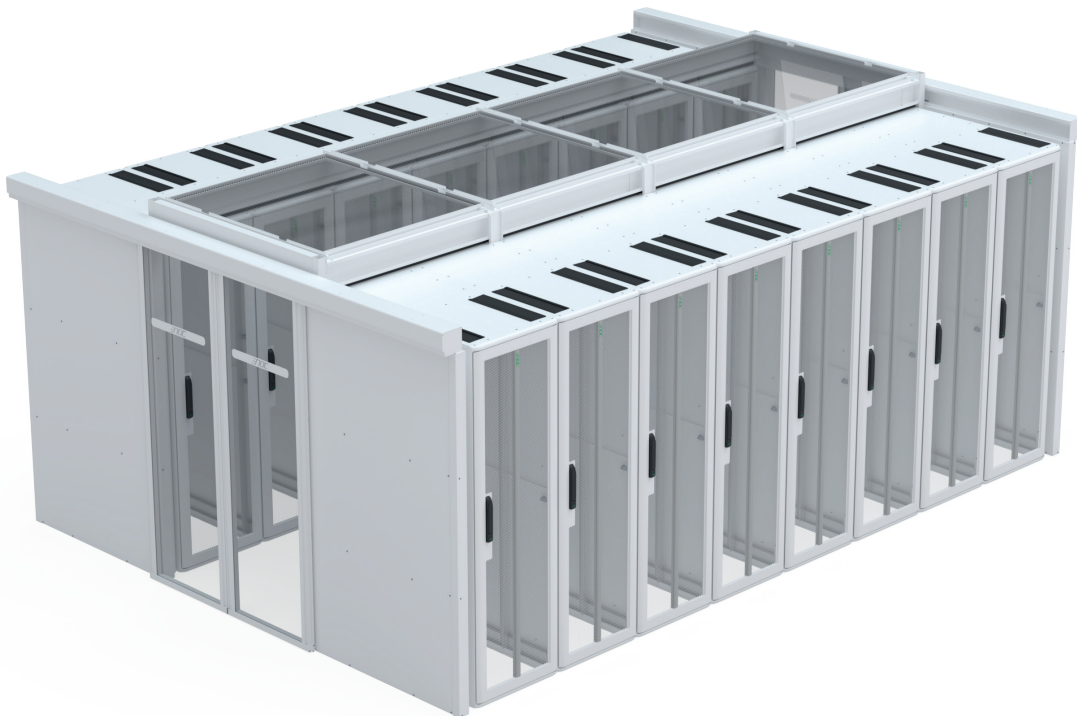
- Any color
- Standard: RAL 9003 (white) and RAL 9005 (black)



CAC-RF

Cold Aisle Containment – Rack Freestanding

CAC-RF, Cold Aisle Containment, ideal for installations where flexibility of racks are required. CAC-RF is a CAC which is partly supported by the racks. Meaning possibility to remove and replace racks when installed. The solution can be adapted to rows of racks with openings and different rack heights and width.



TECHNICAL INFORMATION

- Roof carrying beam and support feet of steel sheet, assembled with screws
- Roofpanels in 16 mm channel plastic
- End of rows are sealed with Enoc KKD G3 door sections

Adaptations

- Double or single row (next to wall)
- Adaptations to building constraints, e.g. columns in the CAC rows

Every solution is customized individually

- Roof height
- Row length and aisle width
- Rack height
- Rack dimensions and number of racks

Colors

- Any color
- Standard: RAL 9003 (white) and RAL 9005 (black)



KKD/KKDW G3 DOOR SECTIONS

KKD G3 is a series of flexible door sections for creating aisle containments together with S1 server enclosures. Standard models for 1200 mm aisle width and cabinet height of 2000 and 2200 mm. Door sections in customized aisle widths are available on request. Four function levels: manual, synchronic, self-closing and automatic.

Manual

Each door blade is manually operated.

Synchronic

Left and right door blade with simultaneous running. Pushing one will automatically operate the other (only in two door versions).

Self-closing

Door blades are spring operated. Doors will self-close when released. System includes soft-close system that catches the door blades the last part and gently closes the door section.

Automatic

Door blades are operated with an electric motor. The system contains two radars, one of each side of the door, that triggers door opening. The doors will self-close when untriggered.



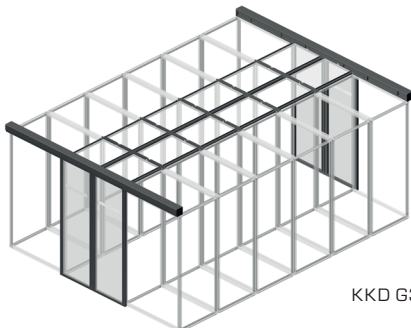
KKD G3

- Double door configuration.
- Fixing on two Enoc S1 racks (1000 or 1200 mm deep and 2000 or 2200 mm high).
- Standard aisle width of 1200 mm. Other widths available on request.
- KKD G3 12XX 32 = 2x1000 mm racks + 1200 mm aisle
- KKD G3 12XX 36 = 2x1200 mm racks + 1200 mm aisle

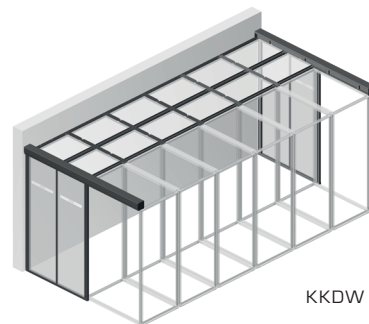


KKDW G3

- Single door configuration for single row aisle close to a wall.
- Fixing on one Enoc S1 rack (1000 or 1200 mm deep and 2000 or 2200 mm high) and on to a wall.
- Standard aisle width of 1200 mm. Other widths available on request.
- KKDW G3 12XX 22 = 1x1000 mm racks + 1200 mm aisle
- KKDW G3 12XX 24 = 1x1200 mm racks + 1200 mm aisle



KKD G3 + KKT G3



KKDW G3 + KKTW G3

TECHNICAL INFORMATION

- Extremely stable door beam from end to end of cabinet. Aluminum cover in one single piece.
- 4 function levels: Manual, Synchronic, Self-closing, Automatic.
- KKD G3 for two row aisles and KKDW G3 for one row aisles next to a wall.
- Door blade in 4 mm in fully tempered security glass framed in an aluminum frame with built in handles.
- Free walking height is the same as cabinet height, 2000 or 2200 mm.
- Finish: Enoc textured black RAL 9005.
- Delivered unmounted including all fixing material.
- Art no 57979, KKTW G3 Wall-fixing required for wall-fixing of KKDW.

TECHNICAL DATA – KKD G3

NAME	ART. NO.	EAN	AISLE WIDTH (mm)	MAX OPENING (mm)	CABINET HEIGHT (mm)	TOTAL WIDTH (mm)	FUNCTION
KKD G3 1220 32-M	57901	7330701098505	1200	1030	2000	3200	M*
KKD G3 1220 32-S	57902	7330701098512	1200	1030	2000	3200	S*
KKD G3 1220 32-SC	57903	7330701098529	1200	1030	2000	3200	SC*
KKD G3 1220 32-A	57904	7330701098536	1200	1030	2000	3200	A*
KKD G3 1220 36-M	57906	7330701098550	1200	1030	2000	3600	M*
KKD G3 1220 36-S	57907	7330701098567	1200	1030	2000	3600	S*
KKD G3 1220 36-SC	57908	7330701098574	1200	1030	2000	3600	SC*
KKD G3 1220 36-A	57909	7330701098581	1200	1030	2000	3600	A*
KKD G3 1222 32-M	57911	7330701098604	1200	1030	2200	3200	M*
KKD G3 1222 32-S	57912	7330701098611	1200	1030	2200	3200	S*
KKD G3 1222 32-SC	57913	7330701098628	1200	1030	2200	3200	SC*
KKD G3 1222 32-A	57914	7330701098635	1200	1030	2200	3200	A*
KKD G3 1222 36-M	57916	7330701098659	1200	1030	2200	3600	M*
KKD G3 1222 36-S	57917	7330701098666	1200	1030	2200	3600	S*
KKD G3 1222 36-SC	57918	7330701098673	1200	1030	2200	3600	SC*
KKD G3 1222 36-A	57919	7330701098680	1200	1030	2200	3600	A*

* M – Manual, S – Synchronic, SC – Self Closing (including Synchronic), A – Automatic

TECHNICAL DATA – KKDW G3

NAME	ART. NO.	EAN	AISLE WIDTH (mm)	MAX OPENING (mm)	CABINET HEIGHT (mm)	TOTAL WIDTH (mm)	FUNCTION	LEFT/ RIGHT
KKDW G3 1220L 22-M	57921	7330701098703	1200	880	2000	2200	M*	L**
KKDW G3 1220R 22-M	57922	7330701098710	1200	880	2000	2200	M*	R**
KKDW G3 1220L 22-SC	57923	7330701098727	1200	880	2000	2200	SC*	L**
KKDW G3 1220R 22-SC	57924	7330701098734	1200	880	2000	2200	SC*	R**
KKDW G3 1220L 22-A	57925	7330701098741	1200	880	2000	2200	A*	L**
KKDW G3 1220R 22-A	57926	7330701098758	1200	880	2000	2200	A*	R**
KKDW G3 1220L 24-M	57931	7330701098802	1200	1080	2000	2400	M*	L**
KKDW G3 1220R 24-M	57932	7330701098819	1200	1080	2000	2400	M*	R**
KKDW G3 1220L 24-SC	57933	7330701098826	1200	1080	2000	2400	SC*	L**
KKDW G3 1220R 24-SC	57934	7330701098833	1200	1080	2000	2400	SC*	R**
KKDW G3 1220L 24-A	57935	7330701098840	1200	1080	2000	2400	A*	L**
KKDW G3 1220R 24-A	57936	7330701098857	1200	1080	2000	2400	A*	R**
KKDW G3 1222L 22-M	57941	7330701098901	1200	880	2200	2200	M*	L**
KKDW G3 1222R 22-M	57942	7330701098918	1200	880	2200	2200	M*	R**
KKDW G3 1222L 22-SC	57943	7330701098925	1200	880	2200	2200	SC*	L**
KKDW G3 1222R 22-SC	57944	7330701098932	1200	880	2200	2200	SC*	R**
KKDW G3 1222L 22-A	57945	7330701098949	1200	880	2200	2200	A*	L**
KKDW G3 1222R 22-A	57946	7330701098956	1200	880	2200	2200	A*	R**
KKDW G3 1222L 24-M	57951	7330701099007	1200	1080	2200	2400	M*	L**
KKDW G3 1222R 24-M	57952	7330701099014	1200	1080	2200	2400	SC*	L**
KKDW G3 1222L 24-SC	57953	7330701099021	1200	1080	2200	2400	A*	L**
KKDW G3 1222R 24-SC	57954	7330701099038	1200	1080	2200	2400	M*	R**
KKDW G3 1222L 24-A	57955	7330701099045	1200	1080	2200	2400	SC*	R**
KKDW G3 1222R 24-A	57956	7330701099052	1200	1080	2200	2400	A*	R**

* M – Manual, SC – Self Closing, A – Automatic

** L – Left [aisle to the left of cabinet seen from outside the aisle], R – Right [aisle to the right of the cabinet seen from outside the aisle]



KKT/KKTW G3 ROOF SECTIONS

KKT G3 is a series of flexible roof sections for creating aisle containments together with S1 server enclosures. Standard models for 1200 mm aisle width and cabinet widths of 800, 600 and 300 mm. Two function levels: standard and radar.

Standard

Standard roof for aisle containment.

Radar

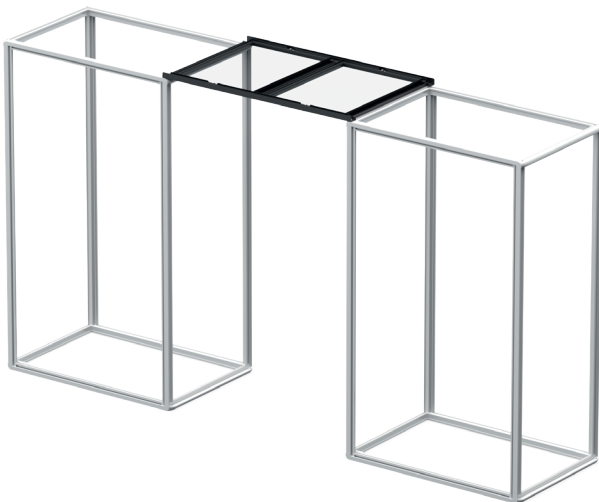
Roof section for fitting next to a KKD G3 Automatic. This roof section holds the radar inside the aisle in ideal position.

TECHNICAL INFORMATION

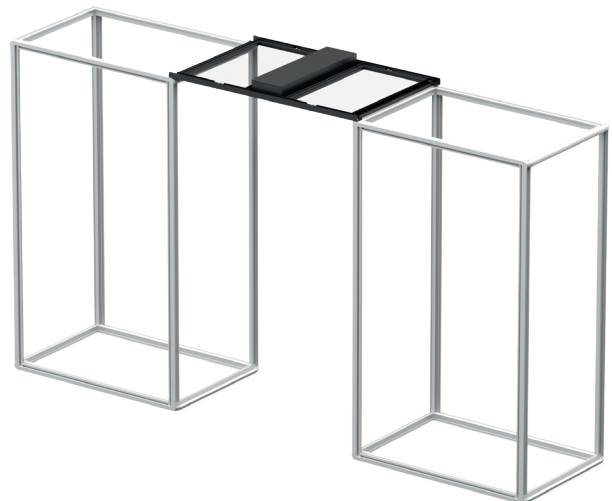
- Extremely stable frame of steel sheet.
- Roof tiles of 4 mm fully tempered security glass, hold in place with slotted lock.
- Free walking height is the same as cabinet height, 2000 or 2200 mm.
- Finish: Enoc textured black RAL 9005.
- Delivered mounted including all fixing material.
- Art no 57979, KKTW G3 Wall-fixing required for wall-fixing of KKTW.

KKT G3

- Fixing on two Enoc S1 racks (1000 or 1200 mm deep and 2000 or 2200 mm high).
- Standard aisle width of 1200 mm. Other widths available on request.



KKT G3 Standard



KKT G3 Radar

TECHNICAL DATA – KKT G3/KKTW G3

NAME	ART. NO.	EAN	AISLE WIDTH (mm)	CABINET WIDTH (mm)	FUNCTION
KKT G3 123	57961	7330701099106	1200	300	
KKT G3 126	57962	7330701099113	1200	600	
KKT G3 128	57963	7330701099120	1200	800	
KKT G3 123 Radar	57966	7330701099151	1200	300	RAD***
KKT G3 126 Radar	57967	7330701099168	1200	600	RAD***
KKT G3 128 Radar	57968	7330701099175	1200	800	RAD***
KKTW G3 123	57971	7330701099205	1200	300	
KKTW G3 126	57972	7330701099212	1200	600	
KKTW G3 128	57973	7330701099229	1200	800	
KKTW G3 123 Radar	57976	7330701099250	1200	300	RAD***
KKTW G3 126 Radar	57977	7330701099267	1200	600	RAD***
KKTW G3 128 Radar	57978	7330701099274	1200	800	RAD***

*** RAD – Roof section for radar sensor (placed directly next to KKT G3 door section (Automatic))

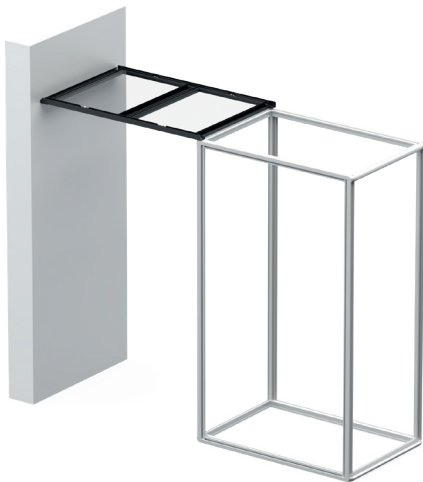
ACCESSORIES

NAME	ART. NO.	EAN	LENGTH (mm)	CABINET WIDTH (mm)	FUNCTION
KKTW G3 Wall-fixing	57979	7330701099281	2400	300	****
IBS 3 X1-S	57108	7330701096075			

**** 2400 mm wall-fixing. For 3 x KKTW G3 128 or 4 x KKTW G3 126. Required for KKTW or KKTW.

KKTW G3

- Roof configuration for single row aisle close to a wall.
- Fixing on one Enoc S1 rack and next to a wall.
- Aisle width: 1200 mm +/-5 mm. Other widths available on request.
- Requires KKTW G3 Wall-fixing accessory.



KKTW G3 Standard



KKTW G3 Radar

ACCESSORIES



KKTW G3 Wall-fixing



IBS 3 X1-S



ENOC RX SYSTEM

TWO-POST AND FOUR-POST RACK SYSTEM

Enoc RX is a system of open server racks, especially suitable for dedicated server rooms as they save space, provide easier access and simplify cable management. Create your own unique solution with our premium rack combined with our various wall and door solutions. The RX System is a modular system suitable both for networks and complete data center solutions thanks to the flexible design and the wide range of accessories.

The possibilities are almost endless.



R1 – Four-post rack

An open and flexible solution that provides the same stability as a server cabinet. Cost-effective and space-saving for large and small installations. Adjustable in depth.



R2 – Two-post rack, free standing

Smart premium solution that uses less floor space than a server cabinet or a four-post rack. Stable and flexible.



R3 – Two-post rack, wall fixed

Open wall mounted server rack for easy access to cables and equipment. Suitable for high density cabling.

TECHNICAL INFORMATION

Open four-post rack with 19" front and back

- Depth 600–900 mm (in 50 mm steps)
- Static load capacity, 1000 kg
- Width 526 mm
- Height 2000 mm/42 HU and 2200 mm/47 HU
- HU marking
- All fixing material included
- Manufactured in steel sheet
- Surface treatment, black structured paint RAL 9005

Open two-post rack with 19" front and back

- Depth 170 mm (450 mm with feet)
- Static load capacity, 500 kg (centralized)
- Width 526 mm
- Height 2000 mm/42 HU and 2200 mm/47 HU
- HU marking
- All fixing material included
- Manufactured in steel sheet
- Surface treatment, black structured paint RAL 9005

Open two-post rack with 19" front

- Depth 555–855 mm (in 50 mm steps)
- Static load capacity, 250 kg (centralized)
- Width 526 mm
- Height 2000 mm/42 HU and 2200 mm/47 HU
- HU marking
- All fixing material included
- Manufactured in steel sheet
- Surface treatment, black structured paint RAL 9005

TECHNICAL DATA – R1, R2 AND R3

NAME	ART. NO	EAN	E NUMBER	WxDxH (mm)	HU
R1 42-S	58301	7330701105517	2503811	526x600-900x2000	42
R1 47-S	58302	7330701105524	2503812	526x600-900x2200	47
R2 42-S	58304	7330701105548	2503813	526x170/450x2003	42
R2 47-S	58305	7330701105555	2503814	526x170/450x2203	47
R3 42-S	58307	7330701105579	2503815	526x555-855x2000	42
R3 47-S	58308	7330701105586	2503816	526x555-855x2200	47



R1 - Four-post rack



R2 - Two-post rack, free standing

QUALITY

Premium quality.
Steel sheet

EASY ACCESS

Fast and flexible handling
Saving space

THREE VERSIONS, TWO SIZES

Width 526 mm, 42 & 47 HU

FAST DELIVERY

Available for immediate delivery



R3 - Two-post rack, wall fixed



EPI G2 RELIABLE POWER DISTRIBUTION UNITS

EPI G2 is a range of PDU:s that can be used alone as reliable power distribution unit without any monitoring functionality. The PDU can be fitted with a monitoring module (EPI MM G2) for local and remote monitoring through TCP/IP or ampere module (EPI AM G2) for local ampere reading.



EPI PDU

- PDU with C13 and C19 outlets in multiple configurations.
- Multiple inlet options.
- PDU will provide power regardless if a monitoring module is fitted or not.
- Possible to add EPI MM monitoring module or EPI AM ampere module.
- Custom configuration of inlet and outlet available on request.

EPI MM, MONITORING MODULE

Each EPI PDU can be used alone to provide reliable power supply without monitoring possibilities, but to monitor (both locally and remotely) an EPI MM needs to be fitted.

- The EPI MM is available in two versions, one for 1 phase PDU:s and one for 3 phase PDU:s:
 - EPI MM 1 G2 - for 1 phase PDU:s
 - EPI MM 3 G2 - for 3 phase PDU:s
- Possible to fit EPI MM monitoring module for IP monitoring of:
 - Input voltage (V)
 - Total load current (A)
 - Total power (kW)
 - Energy consumption (kWh)
- TCP/IP connection
- Local monitoring directly on the monitoring module (EPI MM G2)
- Embedded controlling software (html) for configuration and alarm threshold setting.
- SNMP monitoring.

EPI AM, AMPERE MODULE

Each EPI PDU can be used alone to provide reliable power supply without monitoring possibilities, but to monitor the load locally an EPI AM needs to be fitted.

- The EPI AM is available in two versions, one for 1 phase PDU:s and one for 3 phase PDU:s:
 - EPI AM 1 G2 - for 1 phase PDU:s
 - EPI AM 3 G2 - for 3 phase PDU:s
- Possible to fit EPI AM ampere module for local reading of:
 - Total load current (A)

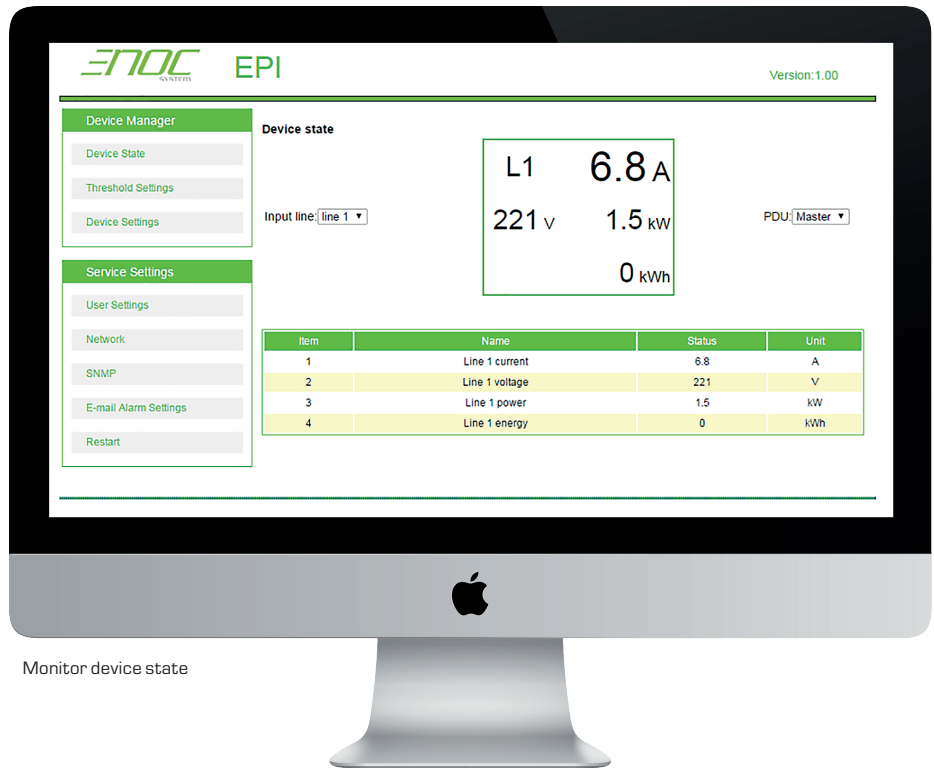


EPI MM REMOTE MONITORING

Each EPI MM can be monitored via html or SNMP through IP.

Through the html interface it is possible to:

- Monitor device state
- Set alarm thresholds



Monitor device state



Set alarm thresholds



EPI PDU RANGE AND ACCESSORIES



EPI 8 16A G2 • IN: C20, 16A OUT: 8xC13



EPI MM 1/3 G2 • Monitoring Module for 1 phase or 3 phase EPI G2 PDU:s



EPI 24+6 16A G2 • IN: IEC60309, 16A OUT: 24xC13, 6xC19



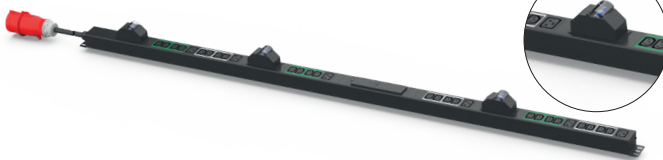
EPI AM 1/3 G2 • Ampere Module for 1 phase or 3 phase EPI G2 PDU:s



EPI 24+6 32A G2 • IN: IEC60309, 32A OUT: 24xC13, 6xC19



EPI 24+6 3x16A G2 • IN: IEC60309, 3x16A OUT: 24xC13, 6xC19

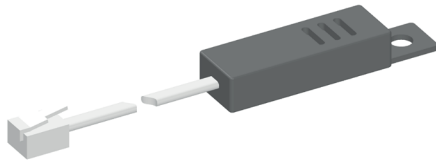


EPI 42+4 32A G2 • IN: IEC60309, 32A OUT: 42xC13, 4xC1



TECHNICAL DATA – EPI POWER DISTRIBUTION UNITS

NAME	ART. NO.	EAN	E NUMBER	IN	OUT C13	OUT C19	LENGTH (mm)
EPI 8 16A G2	54361	7330701031519	2502090	C20 16A	8	-	483
EPI 24+6 16A G2	54362	7330701031526	2502091	IEC60309 16A	24	6	1328
EPI 24+6 32A G2	54363	7330701031533	2502092	IEC60309 32A	24	6	1453
EPI 24+6 3x16A G2	54364	7330701031540	2502093	IEC60309 3x16A	24	6	1378
EPI 24+6 3x32A G2	54365	7330701031557	2502094	IEC60309 3x32A	24	6	1737
EPI MM 1 G2	54366	7330701031564	2502095	-	-	-	172
EPI MM 3 G2	54367	7330701031571	2502096	-	-	-	172
EPI AM 1 G2	54368	7330701031588	2502097	-	-	-	172
EPI AM 3 G2	54369	7330701031595	2502098	-	-	-	172



EPSE 1

Temp/Humidity sensor with 2m cable. To be fitted in EPI MM G2.



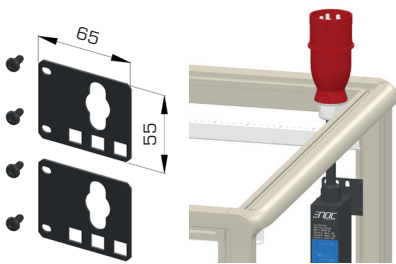
EPB C19-SCHUKO/FRENCH

Conversion cable from C19 to Schuko/French plug. To be fitted at C20 plug.



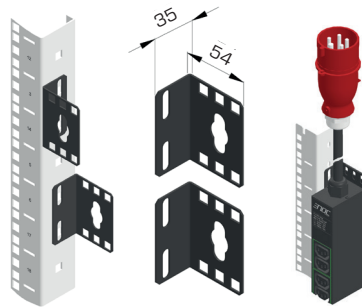
EPB C19-C14

Conversion cable from C19 to C14 plug. To be fitted at C20 plug.



EPMB X1-S

Mounting bracket for fitting accessories in the corner post of the X1 frame. Delivered as a pair.



EPVB X1-S

Mounting bracket for fitting accessories on the side of the 19" profiles. Delivered as a pair.



EPMB-2 X1-S

Mounting bracket for fixing accessories vertically along the corner post. Delivered as a pair.

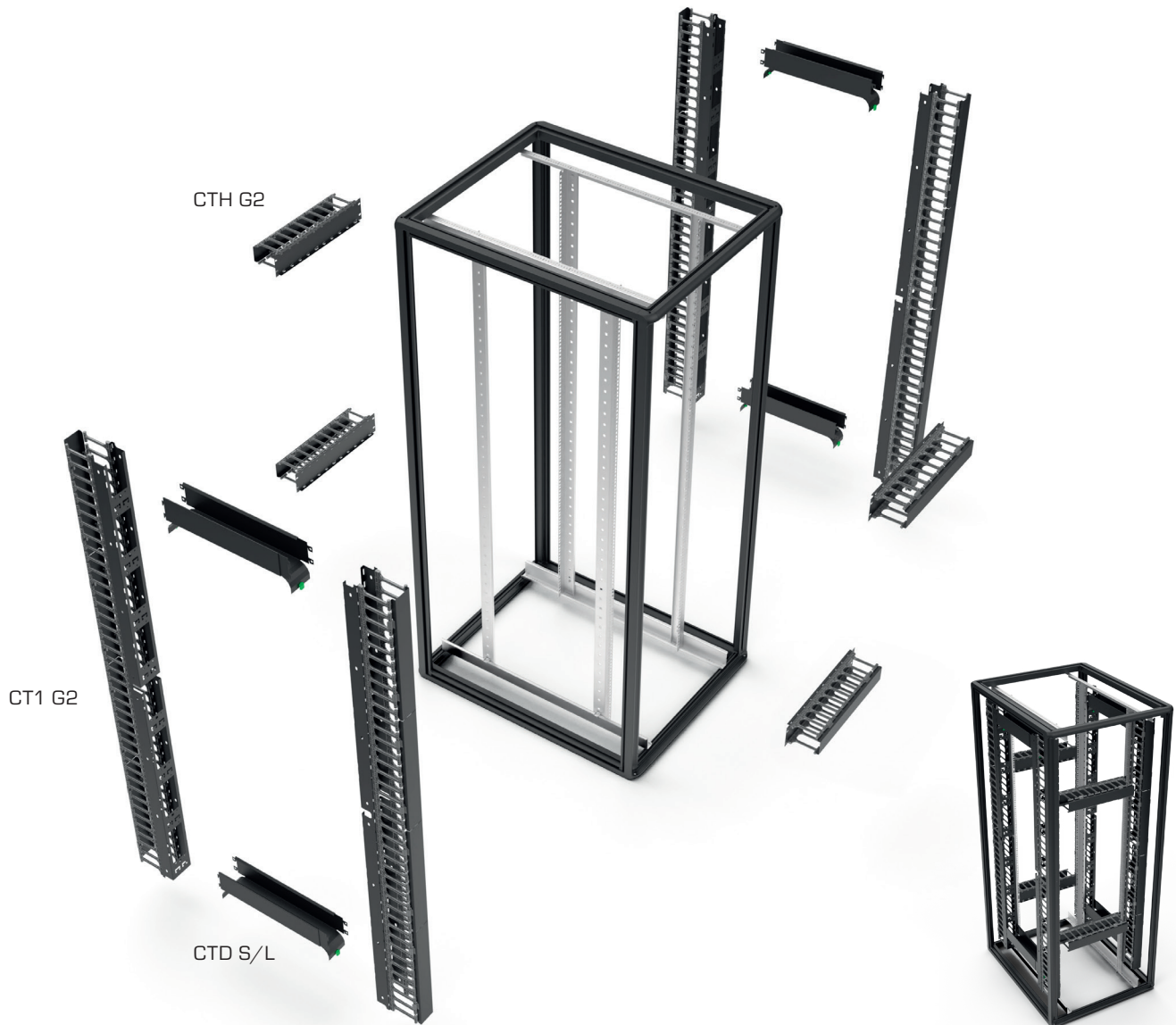
TECHNICAL DATA - ACCESSORIES

NAME	ART. NO.	EAN	E NUMBER	DESCRIPTION
EPSE 1	54490	7330701031403	2597747	Temp/Humidity sensor, 2 m cable
EPB C19-Schuko/French	54488	7330701031380	2500086	Conversion cable, 0,2 m
EPB C19-C14	54489	7330701031397	2500087	Conversion cable, 0,2 m
EPMB-2 X1-S	54500	7330701031502	2503745	
EPMB X1-S	54499	7330701031496	2597987	Mounting bracket Cornerpost, 1 PDU, Pair
EPVB X1-S	56566	7330701090653	2500806	Mounting bracket PR, Pair



CT CABLE TRAY SYSTEM, GENERATION 2

We are introducing an updated range of our popular CT1, CT3 and CT5 products. Generation 2 comes with a new lid and hinge. More sizes, 21 and 26 HU version, besides existing 42 and 47 HU versions. 42 and 47 HU sizes are now divided into 2 pcs for easier transport and storage.



THE ENOC CABLE TRAY SYSTEM MEETS YOUR DIFFERENT NEEDS

CT1 G2 Cable Tray Vertical with premium functions and possibilities.

CT3 G2 Cable Tray Vertical with standard functions, delivered as a pair.

CT5 G2 Cable guide without tray, delivered as a pair.

CTH G2 Cable Tray Horizontal. 19" 2HU cable tray.

CTD S Cable Tray Depth, size small. For supporting cables in the depth direction.

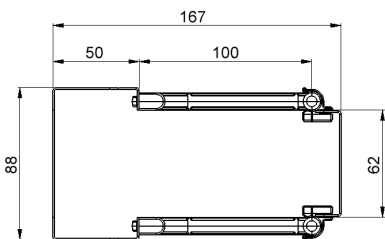
CTD L Cable Tray Depth, size large. For supporting cables in the depth direction.



PREMIUM - CT1 G2

High end vertical cable tray. Fits on the left and right side of the 19" profile in F1, S1 and F3 cabinets.

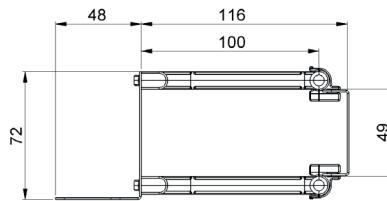
- Metal tray with plastic fingers and metal lid.
- Available in 21, 26, 42 HU and 47 HU version.
- 21, 26 HU version with 2 lids and 42, 47 HU version with 4 lids.
- Lids are hinged both left and right. They can also be removed completely.
- Back of tray have openings for cables going in the depth direction. It is also equipped with holes for cable holders.
- 42 and 47 HU versions are divided into 2 parts, which can be placed individually.
- Possible to fit CTD S/L in the back of the tray.
- KM cagenut fixing (not included).
- Delivered 1 pc.



STANDARD - CT3 G2

Standard vertical cable tray. Fits on the left and right side of the 19" profile in F1, S1 and F3 cabinets.

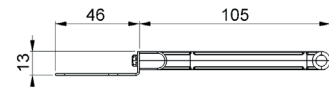
- Metal tray with plastic fingers and metal lid.
- Available in 21 and 42 HU version.
- 21 HU version with 1 lid and 42 HU version with 2 lids.
- Lid is hinged on both left and right. It can also be removed completely.
- 42 HU version is divided into 2 parts, which can be placed individually.
- KM cagenut fixing (not included).
- Delivered 1 pc.



BASIC - CT5 G2

Basic vertical cable manager without tray. Fits on the left and right side of the 19" profile in F1, S1 and F3 cabinets.

- Metal holder with plastic fingers.
- Available in 21, 26, 42 and 47 HU version.
- 42 and 47 HU version is divided into 2 parts, which can be placed individually.
- KM cagenut fixing (not included).
- Delivered 1 pc.



TECHNICAL DATA - CT1 G2, CT3 G2 AND CT5 G2

NAME	ART. NO.	EAN	E NUMBER	WxDxH (mm)	MIN CABINET HEIGHT
CT1 21 G2	56973	7330701106132	2506313	88 x 167 x 888	1200 mm (24 HU)
CT1 26 G2	56974	7330701106149	2506314	88 x 167 x 1110	1400 mm (29 HU)
CT1 42 G2	56975	7330701106156	2506315	88 x 167 x 1777	2000 mm (42 HU)
CT1 47 G2	56976	7330701106163	2506316	88 x 167 x 1999	2200 mm (47 HU)
CT3 21 G2	56979	7330701106194	2506317	72 x 165 x 888	1200 mm (24 HU)
CT3 42 G2	56981	7330701106217	2506318	72 x 165 x 1777	2000 mm (42 HU)
CT5 21 G2	56984	7330701106248	2506319	13 x 151 x 888	1200 mm (24 HU)
CT5 26 G2	56985	7330701106255	2506320	13 x 151 x 1110	1400 mm (29 HU)
CT5 42 G2	56986	7330701106262	2506321	13 x 151 x 1777	2000 mm (42 HU)
CT5 47 G2	56987	7330701106279	2506322	13 x 151 x 1999	2200 mm (47 HU)



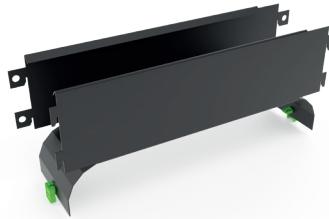
CABLE TRAY SYSTEM ACCESSORIES



CTH G2

Cable tray horizontal. 19" 2HU cable tray using the same components as CT1.

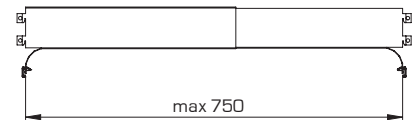
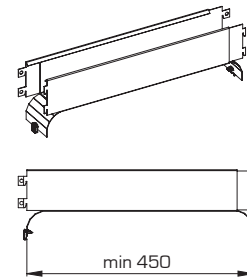
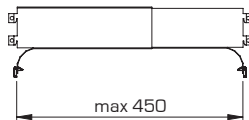
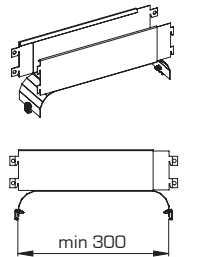
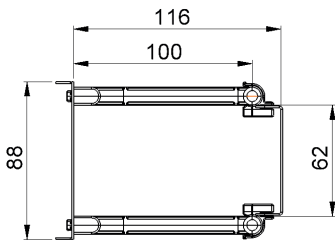
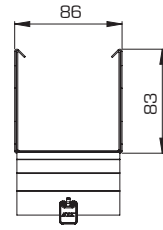
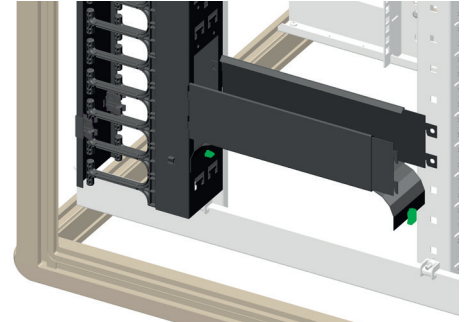
- Metal tray with plastic fingers and metal lid.
- 2 HU, 19" fixing.
- Lid is hinged both top and bottom and can be removed completely.



CTD S/L

Cable tray depth. For supporting cables in the depth direction. Either between two CT1 or between one CT1 and a 19" profile.

- Stepless adjustable depth
- Available in two sizes.
- CTD S, 300–450 mm depth
- CTD L, 450–700 mm depth
- Toolfree fixing in CT1
- KM Cagenut required for fixing in 19" profile (not included)
- Bend radius control built in



TECHNICAL DATA

NAME	ART. NO.	EAN	E NUMBER	W x D x H (mm)	REMARK
CT1 42	56875	7330701093746	2501235	88 x 166 x 1777	1 pcs, 2000 mm F1
CT1 47	56876	7330701093753	2501236	88 x 166 x 1998	1 pcs, 2200 mm F1
CT3 42	56881	7330701093807	2501237	75 x 165 x 1777	Pair, 2000 mm F1
CT3 47	56882	7330701093814	2501277	75 x 165 x 1998	Pair, 2200 mm F1
CT5 42	56886	7330701093852	2501238	13 x 151 x 1777	Pair, 2000 mm F1
CT5 47	56887	7330701093869	2501278	13 x 151 x 1998	Pair, 2200 mm F1
CTH G2	56991	7330701106316	2506323	482 x 127 x 88	19", 2HU
CTD S	56896	7330701093951	2501240	86 x 300 x 132	1 pcs, 300–450 mm
CTD L	56897	7330701093968	2501241	86 x 450 x 132	1 pcs, 450–700 mm



AIR CONTROL ACCESSORIES

A range of cover panels for air control.

TPP COVER PANEL 19"

- Made of plastic. All included materials are free from halogen and chlorine compounds.
- The product's fire safety properties are tested according to IEC 60695-11-10/UL94.
- Blank cover panel.
- Tool-free mounting in 19" profiles.
- Can also be used with cable ring KPB as a cable panel.



TECHNICAL DATA – TPP BLACK

NAME	ART. NO.	EAN	WxDxH (mm)	NUMBER OF	HU
TPP 01-S	54802	7330701026515	485 x 19 x 44	10	1
TPP 01-S	54803	7330701026522	485 x 19 x 44	126	1

TPS/TPSK G2 AIR GUIDING KIT, GENERATION 2

- Cover panel kit for obstructing airflow from back to front in S1 server enclosure.
- TPS is a cover panel kit without openings.
- TPSK is a cover panel kit with openings covered in soft rubber for cables from front to back. It contains 3 x 1HU vertically on each side. Each HU is covered with TPS blind panel.
- All fixing material included.
- Manufactured in steel sheet.
- Surface treatment, black structured paint RAL9005.



TECHNICAL DATA – TPS/TPSK G2 BLACK

NAME	ART. NO.	EAN	E NUMBER	F1/S1 WIDTH (mm)	F1/S1 HEIGHT
TPS 620/622 X1-S G2	56586	7330701090851	2503805	600	2000/2200
TPS 820 X1-S G2	56587	7330701090868	2503806	800	2000
TPSK 820 X1-S G2	56588	7330701090875	2503807	800	2000
TPS 822 X1-S G2	56589	7330701090882	2503808	800	2000
TPSK 822 X1-S G2	56590	7330701090899	2503809	800	2000



THE ENTIRE SUPPLY CHAIN

Enoc takes care of the entire supply chain and ensures that the customer's needs and wishes are in focus. We take responsibility all the way from project planning to on-site assembly. Fast and smooth for our customers with deliveries on time and quality-assured assembly on site. Smart and safe for everyone.







THE ENOC WAY

Enoc is the leading manufacturer of enclosures and accessories for computer installations. The company has its headquarters in Sweden and sales offices in Germany and representatives in five other countries. Our production is based on a flexibility and ability to quickly customize the manufacture to markets demand. Products are characterized by quality, detail flexibility and design. At Enoc we are committed to finding the solution that best fits you. That is what we call "The Enoc way".

DETAILS MAKE THE DIFFERENCE

Enoc System, Box 159
SE-334 23 Anderstorp, Sweden
Tel: +46 (0)371-588 160
enocsystem.com