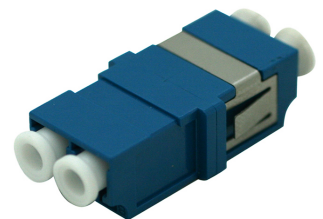
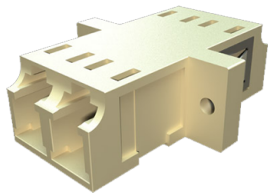


LC Adapters



Our range of LC adapters have high precision alignment sleeves for improved reliability and better reconnectability. The LC adapters come with ceramic sleeves for both single mode and multimode. The housing is available in different colors with options for flange or flangeless body and metal or inbuilt clips.

FEATURES/BENEFITS

- Complies with IEC 61754-20
- High precision alignment sleeve
- Low insertion loss and high reconnectability
- REACH SvHC compliant
- Materials compliant to RoHS2
- Available in simplex, duplex and quad adapters

APPLICATIONS

- Telecommunications networks
- CATV, LAN, MAN and WAN application
- Data processing networks
- Cable television
- Fiber-To-The-Home
- Premises distribution

SPECIFICATIONS

DESCRIPTION	CERAMIC	CONFORMANCE
Insertion Loss (Typ)	0.1 dB	IEC 61300-3-4
Mating Durability	500	IEC 61300-2-2
Receptacle Retention Force	1 N - 2.5 N	IEC 61754-20
Operating Temperature	-25 to +70 °C, 12 cycles	IEC 61300-2-22

ORDERING INFORMATION

Flange* with two holes and SC duplex footprint with metal clips

MODE	TYPE	COLOUR	PART NUMBER
SM	APC	GREEN	LCQUADGREEN-W
SM	PC	BLUE	LCQUADBLUE-W
MM	PC	BEIGE	LCQUADBEIGE-S
MM	PC	AQUA	LCQUADAQUA-W

Flange* with two holes and SC simplex footprint with metal clips

MODE	TYPE	COLOUR	PART NUMBER
SM	APC	GREEN	LCAPCUDGREEN
SM	PC	BLUE	LCDPXBLUE
MM	PC	BEIGE	LCDPXBEIGE
MM	PC	AQUA	LCDPXAQUA
MM	PC	ERIKA VIOLET	LCDPXEVI

Flangeless with RJ45 footprint with inbuilt clips

MODE	TYPE	COLOUR	PART NUMBER
		BLUE	LCUDZR02

* For ordering a flangeless version of the adapter, please add /FL at the end of the code provided above. For example: LCDPXAQUA/FL will refer to a duplex multimode, LC adapter in aqua color, flangeless with metal clips.



SCAN QR FOR PRODUCT PAGE

FURTHER INFORMATION

- For additional information please contact your sales representative
- To view the product 360 visit the product page (Scan the QR code or visit the link below)
- Downloaded from <https://www.aflhyperscale.com/product/lc-adapters>
- AFL Hyperscale reserves the right to make changes in this datasheet at any time without notice
- Information in this document is correct as of June 12, 2019

Europe

+44 (0) 1908 441 144
emeasales@aflhyperscale.com
© AFL Hyperscale 2019

Americas

+1 866 814 8615
usasales@aflhyperscale.com

Middle East & Africa

+971 4 404 9606
mesales@aflhyperscale.com

India

+91 80 46874687
indiasales@aflhyperscale.com

Asia Pacific

+86 755 2561 3694
apacsales@aflhyperscale.com