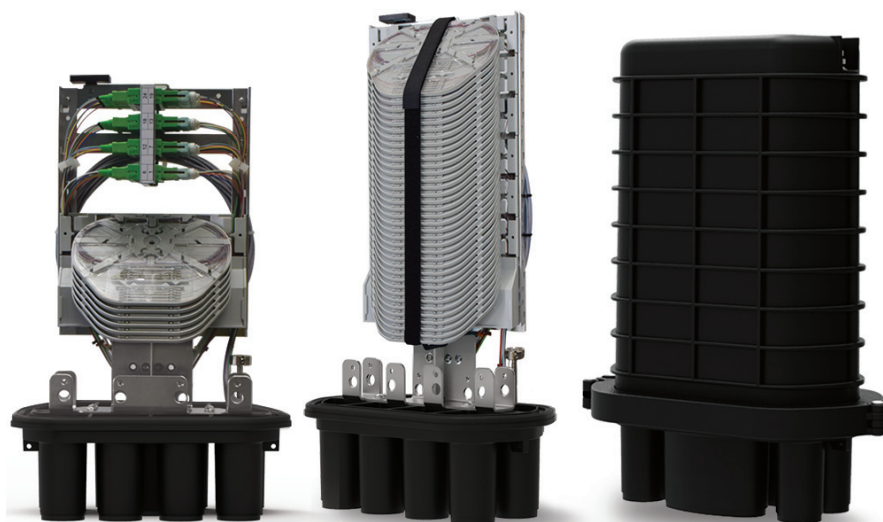


PATCH AND SPLICE COMPACT CLOSURES

CODC2 - CDOC2



Optotec has a wide range of closures matching every needs in telecommunications networks having the following characteristics:

- watertight containers IP68 (IEC 529)
- suitable for traditional cables and micro-cables with G652 and G657 fibers.
- FOCUS CODC2 are splice only closures.
- FOCUS CDOC2 are patch&splices closures.
- Inside a STACK is used to fix SAMX splicing modules on one side, while the other side provide storage space for uncutable cables.
- The FOCUS CDOC2 include also a for SC or LC duplex adapters.
- All closures are equipped of a locking system made up of a CLAMP and a specific silicone gasket that guarantees the seal.
- All Optotec's closures have RFID system.

APPLICATION

For in line closures, branch joints and pot-head

- aerial networks, pole and on the wall
- underground networks: inside handholes / manholes

TECHNICAL FEATURES

- High quality thermoplastic material - watertight
- BASE and DOME (IP68, IEC 529) with clamp and O-ring closing system

Management Capability of various types of tube cables, slotted core and ribbon

Easy access to the junction area through CLAMP opening equipped with a guided locking

Area dedicated to uncut fibres or continuous cables (loop cable)

Internal STACK can be configurable with SAMX modules according to the junction's purposes

The BASE is suitable both the heat-shrinking sealingkit and cold sealing kit (BASE A)



www.optotec.com

CON CX CP OSP CO FOCUS

All the information included in this document, including drawings, illustration and patterns have to be considered reliable; they are registered and owned by Optotec S.p.A, therefore it is strictly forbidden to use them without our previous authorization. However, Optotec makes no warranties as to its accuracy or completeness and disclaims any liability in connection with its use. Optotec's obligations shall only be as set forth in Optotec's Standard Terms and Conditions of Sale for this product and in no case will Optotec be liable for any incidental, indirect or consequential damages arising out of the sale, resale, use or misuse of the product. Users of Optotec products should make their own evaluation to determine the suitability of each such product for the specific application.

Optotec S.p.A. Via Zenale, 44 20024 Garbagnate Milanese (MI) - Italy P.IVA 10730100152 | Telephone: +39 02 99515.1 | FAX: +39 02 99515.222 | info@optotec.it

OPT-B-2020-05-CODC2-CDOC2-ENG

ORDERING INFORMATION

OPTOTEC PN. EXAMPLE:

FOCUS	DOC2	A	A	24	FOCUS CLOSURES PATCH & SPLICE CAPACITY
OPTOTEC PRODUCT LINE	SERIE NAME	BASE TYPE	DOME TYPE	ADAPTERS No. SC OR LC TYPE	FOCUS CLOSURES PATCH & SPLICE CAPACITY DEPENDS ON ADAPTERS, SPLICING MODULES QUANTITY AND TYPE MOUNTED ON THE CLOSURES. ALL CLOSURES ARE USEABLE TO COMBINE DIFFERENT TYPES OF MODULES SAMX ACCORDING TO ALL SPECIFIC NEEDS.
FIBER OPTIC CONNECTING UNIT SYSTEM	CDOC2 = Compact Optical Distribution Closures version 2 - SPLICE ONLY	A	A B	-	
	CDOC2 = Compact Demarcation Optical Closures version 2 - PATCH & SPLICE	A	A -	24	

CLOSURES COMPONENTS AND CONFIGURATIONS

FOCUS CDOC2 AA

H 380 mm
W 280 mm
D 150 mm

UP TO 96 FIBERS SPLICE CAPACITY
1 SAMX HD MODULES AND UP TO 24 ADAPTERS

FOCUS CDOC2 AA

H 380 mm
W 280 mm
D 150 mm

UP TO 280 FIBERS SPLICE CAPACITY
4 SAMX HD MODULES

FOCUS CDOC2 AB

H 450 mm
W 280 mm
D 150 mm

UP TO 432 FIBERS SPLICE CAPACITY
6 SAMX HD MODULES

COMPACT DOME A

COMPACT DOME B

CLAMP
LOCKING CLIP

COMPACT BASE A TYPE

1 OVAL PORT
6 ROUND

PACKAGING

PRODUCT NAME	PACKAGING TYPE	DIMENSIONS (mm)			GROSS WEIGHT (kg.)
		WIDTH	DEPTH	HEIGHT	
FOCUS-CDOC2-AA	Carton box	300	170	400	~2,5
FOCUS-CDOC2-AA	Carton box	300	170	400	~2,5
FOCUS-CDOC2-AB	Carton box	300	170	470	~3

FOCUS CO OSP CP CX CON

www.optotec.com

All the information included in this document, including drawings, illustration and patterns have to be considered reliable; they are registered and owned by Optotec S.p.A, therefore it is strictly forbidden to use them without our previous authorization. However, Optotec makes no warranties as to its accuracy or completeness and disclaims any liability in connection with its use. Optotec' obligations shall only be as set forth in Optotec' Standard Terms and Conditions of Sale for this product and in no case will Optotec be liable for any incidental, indirect or consequential damages arising out of the sale, resale, use or misuse of the product. Users of Optotec products should make their own evaluation to determine the suitability of each such product for the specific application.

Optotec S.p.A. Via Zenale, 44 20024 Garbagnate Milanese (MI) - Italy P.IVA 10730100152 | Telephone: +39 02 99515.1 | FAX: +39 02 99515.222 | info@optotec.it