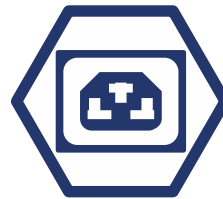


Accurate Environment Monitoring cascading sensors EMD



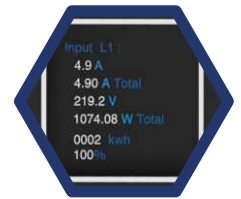
Full Color Range



High Outlet flexibility and alternating phase



RCM Residual Current Monitoring Option



OLED display



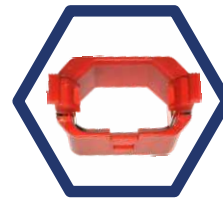
Hydraulic-magnetic Circuit Breakers monitoring



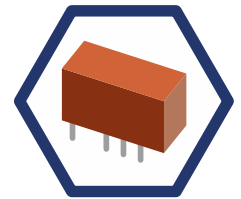
kWh Metering Accuracy



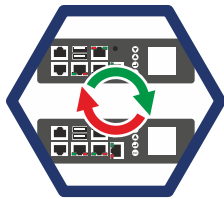
Secure Locking Outlets



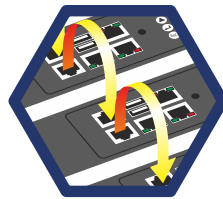
Patented standard C14 plug locking mechanism



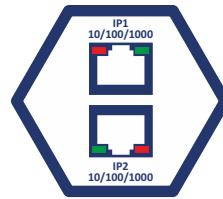
Energy Efficient Latching Relays



Field-Replaceable Controller



PDU Cascading Option



Redundant Network Connections

Mechanical features

- Ultra light aluminium profile
- Full adjustable mounting options
- Low profile hydraulic magnetic breakers 10KA Icn
- C13/C19 combination socket lockable

Inlet Energy Metering

- PDU input energy metering kWh
- PDU input power measurements (W, VA, VAR)
- PDU input (A, V, PF, HZ) measurements
- Circuit breaker monitoring
- Residual current monitoring (optional)
- 3 phase balance indicator

Security Management

- Memory logs for historical data and graphics
- User and alarms thresholds customizable

| Voltage and current | No. of IEX OUTLETS | Item code |
|---------------------------------------|--------------------|--------------------|
| 230V 16A 1 phase | 18 | IEXPIM501816AV |
| | 24 | IEXPIM502416AV |
| | 30 | IEXPIM503016AV |
| | 36 | IEXPIM503616AV |
| | 42 | IEXPIM504216AV |
| 230V 32A 1 phase | 12 | IEXCBPIM601232AH |
| | 18 | IEXCBPIM501832AV |
| | 24 | IEXCBPIM502432AV |
| | 36 | IEXCBPIM503632AV |
| 380 - 415V 16A 3 phase | 48 | IEXCBPIM504832AV |
| | 18 | IEXPIM501816A3PV |
| | 24 | IEXPIM502416A3PV |
| | 36 | IEXPIM503616A3PV |
| 380 - 415V 32A 3 phase | 42 | IEXPIM504216A3PV |
| | 18 | IEXCBPIM501832A3PV |
| | 24 | IEXCBPIM502432A3PV |
| | 36 | IEXCBPIM503632A3PV |
| 380 - 415V 32A 3 phase | 42 | IEXCBPIM504232A3PV |