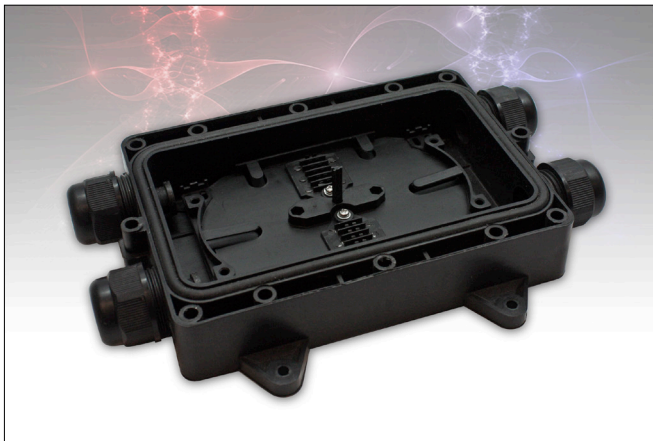


# Compact Type Fibre Optical Splice Closure



Innovative design compact closure, suitable for protecting fibre cable splices in straight-through and for branching applications. Based on an advanced formulae, the plastic parts are made of injection-moulded, high-strength engineering plastics ABS or PC by numerical control equipment. Effectively preventing the product from ageing caused by ambient temperatures and ultraviolet radiation. The strong impact resistant housing and main components provide fire resistant, waterproof and quakeproof properties, while protecting splices

## Features:

- 2 inlet, 2 outlet Splice Closure
- Splice trays available
- Max capacity = 48-fibres (4 x trays, 12-fibres per tray)
- Environment Temperature: -40°C+85°C
- Atmospheric pressure: 70~106Kpa
- Tested and inspected to the highest standards

## Dimensions (including lid)

Length: 230mm; Width: 185mm; Height: 85mm

## Electrical Properties

Insulation resistance between the metallic elements themselves and between metallic element and the earth is more than  $2 \times 10^4 M\Omega$ ;

The Voltage resistance between the metallic elements themselves and between metallic element and the earth is 15KVDC/1min, Non-puncture, no arc-cover.