

Data sheet

SCCA enclosures for communication networks

The Elogic Systems SCCA serie in aluminium with integrated root is a range of outdoor enclosures in multiple sizes. It's designed for use as an access point, copper-based, fibre optic (FTTx) or similar communication networks.



SCCA 350-240



SCCA 500-300

Technical Specifications:

- Aluminium for long life-time, low weight and easy to handle
- Robust wall thickness giving a solid structure
- Surface treatment – polyester coated for an attractive and well-protected finish
- Lock system - different types of lock systems available
- Integrated fixing bar – for cables, fiber, guide tubes & micro-ducts etc.

Features:

- Large lift-off door - gives the operator easy access to the entire installation in one operation.
- Comprehensive range of accessories makes it possible to create individual solutions based on standard products, different backboards, cable management etc.

Approvals:

- Enclosures according to EN 62208, EN 60439-1, EN 60439-5
- IP44 according to EN 60529
- IK 10 according to EN 62262

SCCA data sheet

Doors

All cabinets have lift-off doors. The door can easily be removed for easy access during installation and maintenance.

Heat Dissipation

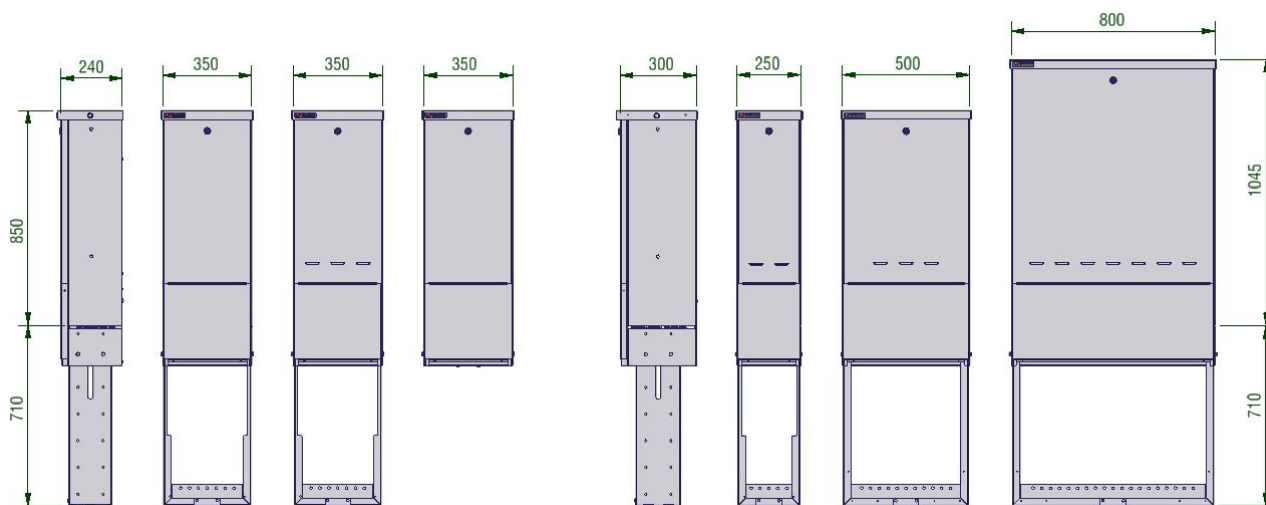
To avoid "hot spots" it's recommended that equipment should be distributed evenly inside the cabinet to ensure adequate ventilation. Heat dissipation issues can often be resolved by selecting a larger cabinet or another colour in the range, which will ensure better air circulation and thus ventilation.

Lock Protection

The standard lift-off doors have a triangular locking system. For additional information about other locking systems, please see the SCCA series accessories list.

Root

The SCCA Series is provided with an integrated root.



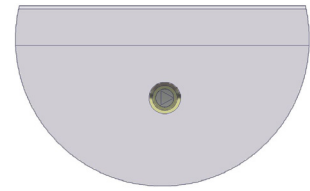
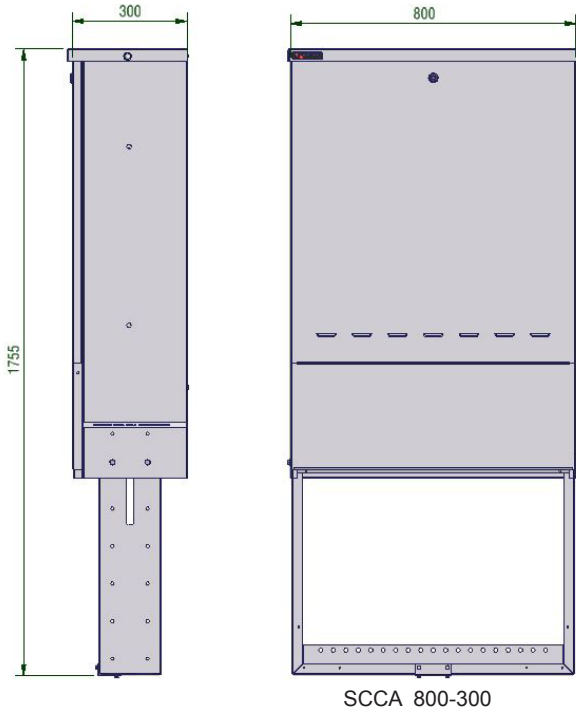
Type	SCCA 250-300	SCCA 350-240 *	SCCA 350-240	SCCA 500-300	SCCA 800-300
Overall Dimensions					
Height above ground (mm)	850	850	850	850	1045
Width (mm)	250	350	350	500	800
Depth (mm)	300	240	240	300	300
Total height with long root (mm)	1560	1560	1560	1560	1755
Mounting volume					
Hight (mm)	690	690	690	690	890
Width (mm)	210	310	310	460	760
Debth (mm)	250	190	190	270	270
Features					
Door type	Lift-off	Lift-off	Lift-off	Lift-off	Lift-off
Insulation of roof	Incl.	Incl.	Incl.	Incl.	Incl.
Compartments	1	1	1	1	1
Earthing point	Yes	Yes	Yes	Yes	Yes
In-ground root	Incl.	No**	Incl.	Incl.	Incl.
Locking system	Single cam	Single cam	Single cam	Single cam	Single cam
Strain relief bar **	Incl.	Incl.	Incl.	Incl.	Incl.
Snow marking	Prepared	Prepared	Prepared	Prepared	Prepared
Packing	Carton box	Carton box	Carton box	Carton box	Carton box
Weight (kg)	11,2	12,5	12	17	28
Pieces per pallet	12	10	10	4	4
Colour	RAL 7037	RAL 7037	RAL 7037	RAL 7037	RAL 7037

* SCCA 350-240 for pole-mounting

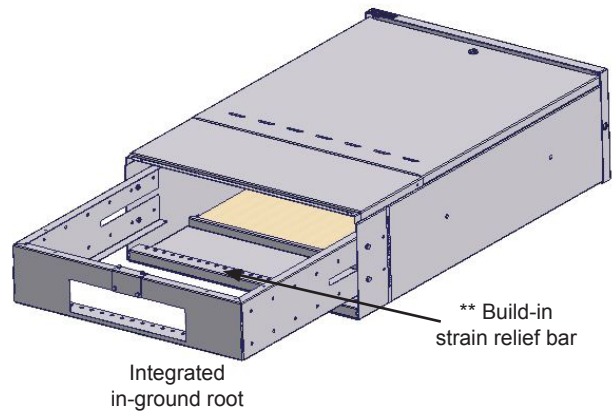
** See picture page 3

SCCA data sheet

Solutions with triangular lock



Triangular locking system



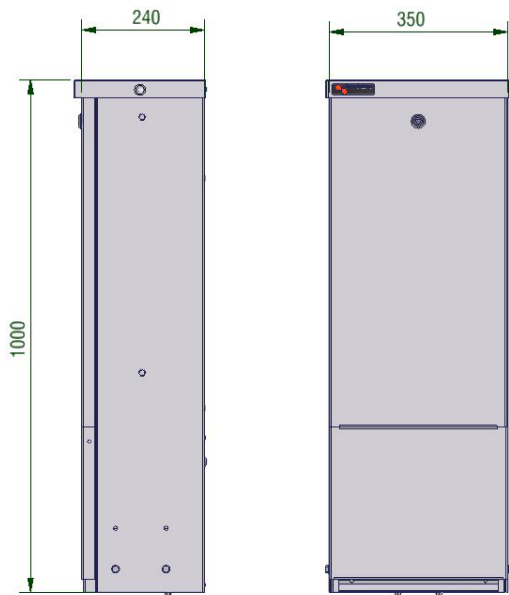
SCCA 350-240 with plywood backboard



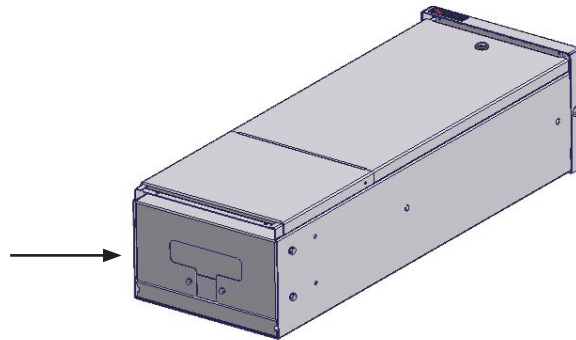
SCCA 350-240 with in-ground root

SCCA data sheet

Solutions for pole-mounting



SCCA 350-240



Bottom plate for pole-mounting



SCCA 350-240
for pole-mounting



SCCA 350-240
with pole-mounting bracket

SCCA accessories

Different accessories

Description	Type	For enclosure	Part number	EAN number
Locks				
Triangel Lock set	TLT 0	All SCCA enclosures	225930	5711252259300
Triangel key	TK1	All SCCA enclosures	848610	5711258486106
"EBR" lock set	TLT 3	All SCCA enclosures	225941	5711252259416
"EBR" key	SK1	All SCCA enclosures	598983	5711255989839
C101 Lock	C101	All SCCA enclosures	225909	5711252259096
Other parts				
Condensation block				
Condensation block	CB 50mm	SCCA 250-300mm	598123	5711255981239
Condensation block	CB 50mm	SCCA 350-240mm	598120	5711255981208
Condensation block	CB 50mm	SCCA 500-300mm	598121	5711255981215
Condensation block	CB 50mm	SCCA 800-300mm	598122	5711255981222
Connection kit RAL 7037	CSA	For connection	251886	5711252518865

Locks



Triangular Lock set



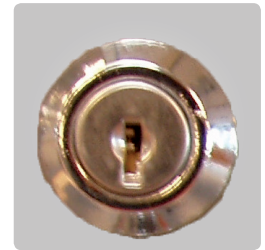
Triangel key



"EBR" Lock set



"EBR" key

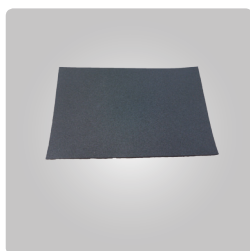


C101 Lock

Other parts



Condensation block - made of 50 mm foam material



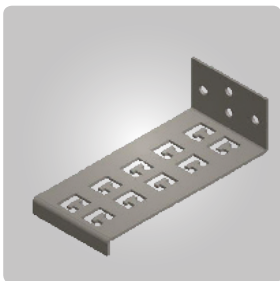
Insulation for roof
"Standard with all enclosures"



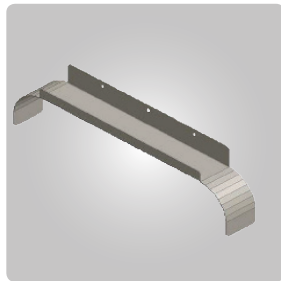
Connection kit

SCCA accessories

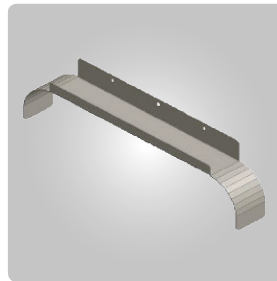
Description	Type	For enclosure	Part number	EAN number
Cable organiser for 5 cables	CO-5C		252199	5711252521995
Cable bracket - W320 x D60mm	CB-320	SCCA 500-300 & SCCA 800-300	252499	5711252524996
Cable bracket - W440 x D60mm	CB-440	SCCA 500-300 & SCCA 800-300	252498	5711252524989
Radius limiter - D140mm	RL-140		252190	5711252521902
Radius limiter - D225mm	RL-225	SCCA X-300	252191	5711252521919
In-ground root adapter (aluminium)	IGRA	SCCA 350-240	222223	5711252222236
Bottom plate	BPA	SCCA 350-240		
Pole-mounting set, galvanized steel	PMA	SCCA	222224	5711252222243
Pole and wall mounting adapter	PWMA	SCCA 350-800	598131	5711255981314
Pole and wall mounting adapter 350-800 (2pcs/set)	PWMA	SCCA 220-250	598130	5711255981307



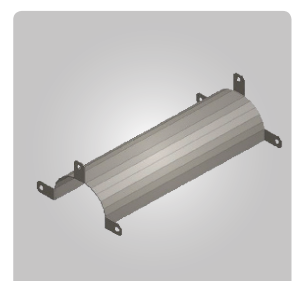
Cable organiser



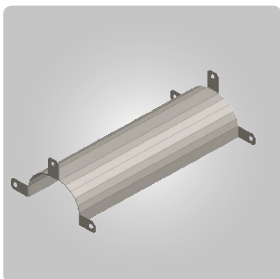
Cable bracket W320 X D360mm



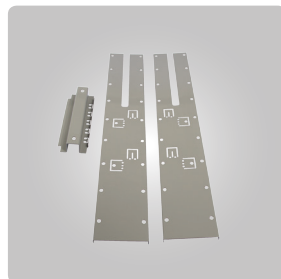
Cable bracket W440 X D60mm



Radius limiter D140mm



Radius limiter D225mm



In-ground root adapter



Bottom plate



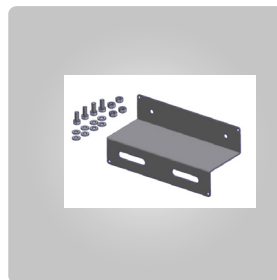
Bottom plate



Pole-mounting set



Pole and wall mounting adapter for 220-250



Pole and wall mounting adapter for 350-800

SCCA accessories

Backboards

Description	Type	For enclosure	Dimension	Part number	EAN number
Moisture-resistant plywood	MPPW	SCCA 250-300	210x690x12	222225	5711252222250
Moisture-resistant plywood	MPPW	SCCA 350-240	310x690x12	222226	5711252222267
Moisture-resistant plywood	MPPW	SCCA 500-800	460x690x12	222227	5711252222274
Moisture-resistant plywood	MPPW	SCCA 800-300	760x890x12	222228	5711252222281



Moisture-resistant plywood



MPR

"Available by request"

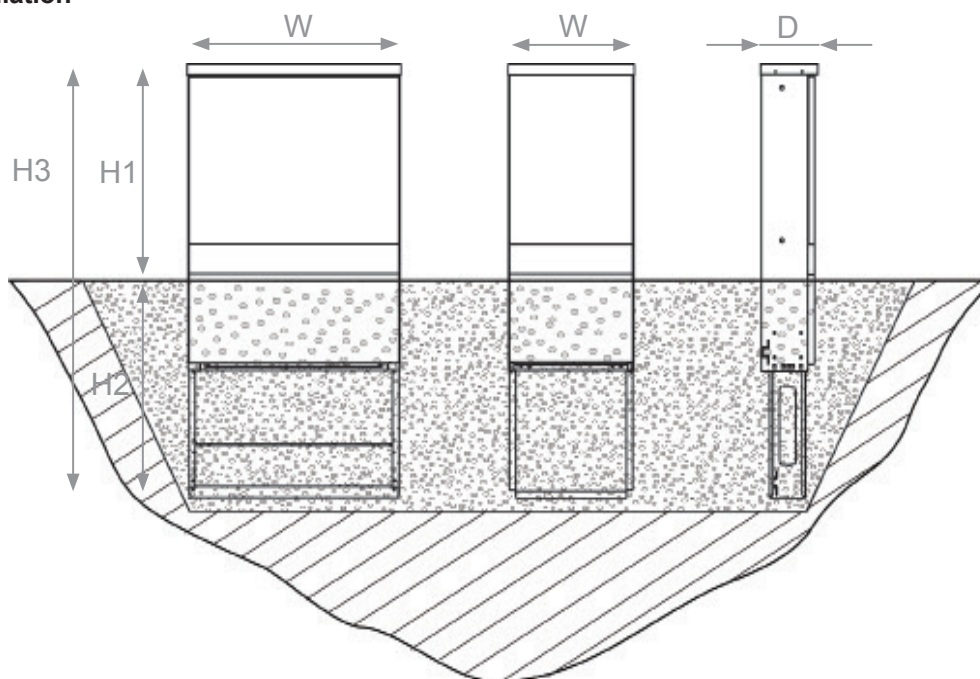


Moisture-resistant chipboard

"Available by request"

SCCA installation guide

In-ground installation



Correct installation
(Illustration)

In-ground installation

In order to optimise lifetime the enclosure must be buried in pure sand (i.e. without clay content) so that water drains away effectively.

To ensure sufficient drainage, Elogic Systems recommends a minimum layer of 300 mm sand surrounding the enclosure in the ground. Care must also be taken on installation to avoid galvanic corrosion.

The sides of the enclosure are provided with marking tape with the text "Ground level". We recommend burial of the plinth so that the marking tape is up to 50 mm above the finished ground level as the terrain may change over time and cover i.e. the louvres.

Type	SCCA 250-300	SCCA 350-240	SCCA 350-240	SCCA 500-300	SCCA 800-300
Overall dimensions					
H1 - Height above ground (mm)	850	850	850	850	1045
H2 - Height under ground (mm)	710	710	710	710	710
H3- Total height (mm)	1560	1560	1560	1560	1755
W - Width (mm)	250	350	350	500	800
D - Depth (mm)	300	240	240	300	300

Elogic Systems A/S

Bjørnkærvej 3 • DK-8783 Hornslyd

Telefon 88 20 71 00

info@elogicsystems.dk • www.elogicsystems.dk