



guiding
connections

NOVOSEAL : SPLITTABLE MICRODUCT ENDSTOP

PRODUCT DESCRIPTION

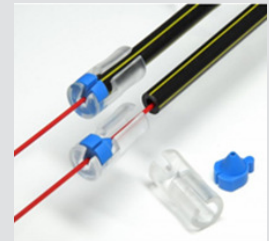
This product is a divisible endstops for cable filled microducts.

The seal is specially designed to safeguard the water tightness with these products. The colour of the seal depends on the size of the cable that can be installed.

There are 2 configurations available.

The type A for small diameters, from 4 to 10mm. It is a slim and space saving design.

The type B for bigger diameters from 10 to 20mm. This one is more robust, suitable for DB applications.



APPLICATION AREA

The Novoseal – splittable microduct endstop will be used to seal the space between microduct and the cable. The application is typical for using it in an underground manhole application to prevent water in the pipe network. The type A is a “light configuration” for above ground application”. The type B is a stronger product with higher impact resistance.

Application temperatures: as from -15 °C.

PRODUCT FEATURES

Splittable (support and seal)

- Water tight up to 0,5 bar
- Gas tight up to 0,5 bar (14 days test)
- Compact design
- Suitable for low temperature installation
- Easy installation
- Small number of components

Accessible & Watertight Solutions for
latest generation telecom networks

FOR TYPE A PRODUCTS

PRODUCT COMPONENTS

Part	Description	No of parts
A.	Plastic housing	1
B.	Rubber seal	1



Different seals are available depending on the cable installed.

PRODUCT VARIATIONS

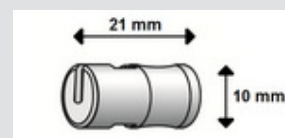
Products is available for 4, 5, 7, 8 and 10mm microducts for cable sizes from 0.9 - 4 mm in diameter see the table below.

Other sizes are on request

PRODUCT SPECIFICATIONS

Material

Plastic housing : Polycarbonate
Seal : TPE



Dimensions

Duct size OD [mm]	Cable diameter [mm]	A [mm]	B[mm]	Weight [g]	Wavin article no
4	0,9-1,2	21	10	13	4048180
	1,3-1,5	21	10	13	4048181
	1,6-1,8	21	10	13	4048182
5	0,9-1,2	21	10	13	4048184
	1,3-1,5	21	10	13	4048185
	1,6-1,8	21	10	13	4048206
	1,9-2,2	21	10	13	4048207
	2,3-2,5	21	10	13	4048208
7	0,9-1,2	21	10	13	4048209
	1,2-1,5	21	10	13	4037476
	1,6-1,8	21	10	13	4048210
	1,9-2,2	21	10	13	4048211
	2,3-2,5	21	10	13	4037477

8	0,9-1,2	21	13	13	4065334
	1,2-1,5	21	13	13	4065335
	1,6-1,8	21	13	13	4065336
	1,9-2,2	21	13	13	4065337
	2,3-2,5	21	13	13	4065338
10	2,0-2,2	24	15	20	4065339
	2,5-2,7	24	15	20	4065340
	2,9-3,1	24	15	20	4065341
	3,3-3,5	24	15	20	4065342
	3,7-4,0	24	15	20	4065343

Colour

Scales + keys : Black
Seals : Depends on the size of the cable

PRODUCT PERFORMANCE

Gas tightness : 0,5 bar 24h
Water tightness : 0,5 bar 24h
Impact resistance : not tested (not relevant for application above ground in street cabinets)
Pull out force pipe : from 4 to 7mm >20N ; 8mm > 50N ; 10mm > 100N
Pull out force cable : depending on cable

INSTALLATION

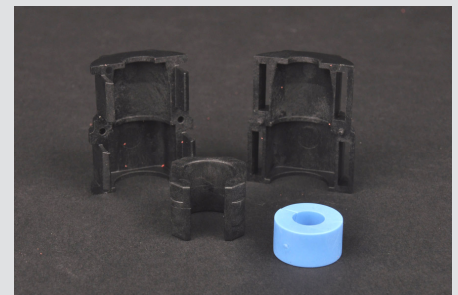
For installation method we refer to the quick reference manual for this in every product bag.

FOR TYPE B PRODUCTS

PRODUCT COMPONENTS

Part	Description	No of parts
A.	Plastic scales	2
B.	Cutting blocks	1
C.	Rubber seal	1

Different seals are available depending on the cable installed.



PRODUCT VARIATIONS

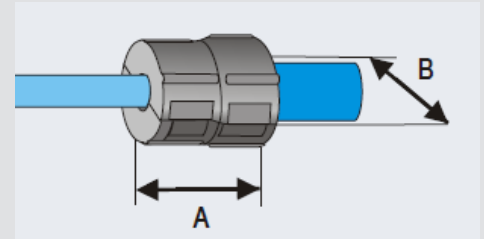
Products is available for 10, 12, 14, 16, 18 and 20 mm microducts for cable sizes from 1,0 – 12 mm in diameter see the table below.

Other sizes are on request

PRODUCT SPECIFICATIONS

MATERIAL

Plastic scales : glass fibre reinforced polyamide
 Cutting blocks : glass fibre reinforced polyamide
 Seal : TPE

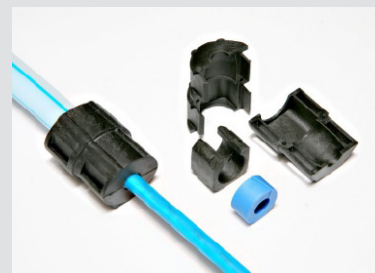


Dimensions

Duct size OD [mm]	Cable diameter [mm]	A [mm]	B [mm]	Weight [g]	Wavin article no
10	2,5 - 1,0	32	25	20	4058717
	3,5 - 2,5				4037142
	5,0 - 3,5				4037143
	6,5 - 5,0				4037144
	7,5 - 6,5				4037145
12	2,5 - 1,0	32	25	20	4058718
	3,5 - 2,5				4037146
	5,0 - 3,5				4037147
	6,5 - 5,0				4037148
	8,0 - 6,5				4037149
	8,5 - 7,0				4058719
14	2,5 - 1,0	34	29	25	4058720
	3,5 - 2,5				4058721
	5,0 - 3,5				4057369
	6,5 - 5,0				4048107
	8,0 - 6,5				4037150
	10,0 - 8,0				4037151
16	2,5 - 1,0	34	29	25	4058722
	3,5 - 2,5				4058723
	5,0 - 3,5				4048095
	6,5 - 5,0				4048106
	8,0 - 6,5				4037152
	10,0 - 8,0				4037153
18	3,5 - 2,5	36	34	30	4058724
	5,0 - 3,5				4058725
	8,0 - 6,5				4057371
	9,5 - 8,0				4057370
	12,0 - 9,4				4037154
20	5,0 - 3,5	36	34	32	4058736
	6,5 - 5,0				4058737
	8,0 - 6,5				4057373
	9,5 - 8,0				4057372
	12,0 - 9,4				4037155

Colour

Scales + keys : Black
Seals : Depends on the size of the cable

**PRODUCT PERFORMANCE**

Gas tightness : 0,5 bar (14 days test)
Water tightness : 0,5 bar
Impact resistance : 3 Joule at -15 °C
Pull out force pipe : 10 mm; 135 N / 12 mm; 240 N
Pull out force cable : 6,5 mm; 3N / 7,2 mm; 27 N / 8,0 mm; 45 N

INSTALLATION

For installation method we refer to the quick reference manual for this in every product bag.