

## INDOOR BOXES FOR FIBER DISTRIBUTION

**RS 4M · RS 8M · RS 12M**



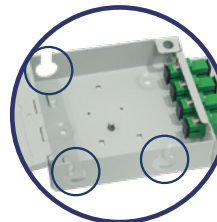
- ✓ Trunk cable entry / exit with direct passage or through the same face of the device.
- ✓ Fusion accessory included
- ✓ Support for PLC splitter included
- ✓ Mounted SC / APC adapters
- ✓ Prepared to clamp the output fibers



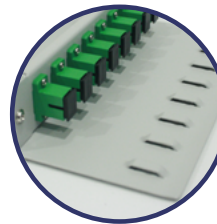
RS 4M



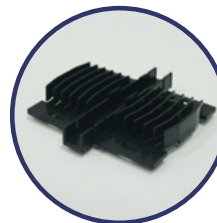
RS 8M



Inputs / outputs trunk cable



Flange fixings



Fusing tray + support for PLC splitter

## TECHNICAL INFORMATION

REFERENCE	RS 4M	RS 8M	RS 12M
Code	361033	361034	361038
Inputs / Outputs backbone fiber cable	3	3	3
Fusion tray capacity (fixed type)	4	8	12
Adapters SC / APC (mounted)	4	8	12
Dimensions (W x H x D)	180 x 105 30 mm	240 x 170 x 35 mm	240 x 170 x 35
Accessories	1x PLC splitter bracket 1x Tray 6 fusions 2x Cable guides 2x Cable glands 2x inlet / outlet gland covers 2x lid closing plungers 5x Cable ties 4x 45mm Fusion Heat Shrink Protectors 3x Screws and fixing plugs	1x PLC splitter support + Tray 12/24 fusions 2x Cable guides 2x Cable glands 2x inlet / outlet gland covers 2x lid closing plungers 10x Cable ties 8x 45mm Fusion Heat Shrink Protectors 3x Screws and fixing plugs	1x PLC splitter support + Tray 12/24 fusions 2x Cable guides 2x Cable glands 2x inlet / outlet gland covers 2x lid closing plungers 14x Cable ties 12x 45mm Fusion Heat Shrink Protectors 3x Screws and fixing plugs